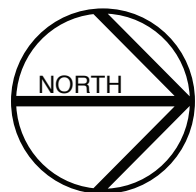


UNIT LOCATION SITE MAP

NOVELLA II



A ELEVATION STYLE

A FLOOR PLAN

M WATER METER ROOM

CORNERSTONE BLVD.

CORNERSTONE WAY

CORNERSTONE PARADE

CORNERSTONE LANE



THE DEVELOPER AND BUILDER RESERVE THE RIGHT TO MAKE MODIFICATIONS AND CHANGES TO THE BUILDING, ANY UNIT, PARKING AREA AND STORAGE AREA DESIGN, SPECIFICATIONS, FEATURES AND FLOOR PLANS IN ORDER TO MAINTAIN THE HIGH STANDARDS OF THIS DEVELOPMENT OR TO COMPLY WITH MUNICIPAL REQUIREMENTS. THE SQUARE FOOTAGE AND ROOM DIMENSIONS ARE BASED ON ARCHITECTURAL DRAWINGS AND MEASUREMENTS. THE LOCATION OF UTILITIES MAY NOT BE ACCURATELY DEPICTED HEREIN. FURNITURE LAYOUTS DEPICT STANDARD FURNISHING SIZES AND ARE INTENDED FOR REFERENCE ONLY. ALL SIZES AND DIMENSIONS ARE APPROXIMATE AND ACTUAL AREA AND DIMENSIONS MAY VARY FROM THE PRELIMINARY PLANS TO THE FINAL SURVEY. ERRORS AND OMISSIONS EXCEPTED. IN THE EVENT OF DISCREPANCY BETWEEN THE MARKETING DOCUMENTS AND THE PURCHASE CONTRACT, THE PURCHASE CONTRACT WILL PREVAIL.

EXTERIOR ELEVATION STYLES

NOVELLA II



ELEVATION **A**



ELEVATION **B**



ELEVATION **C**

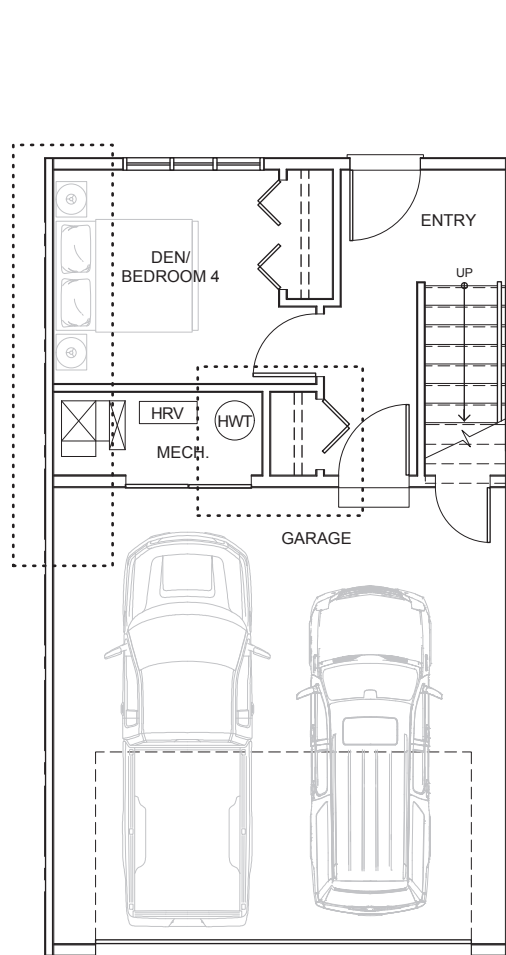
THE DEVELOPER AND BUILDER RESERVE THE RIGHT TO MAKE MODIFICATIONS AND CHANGES TO THE BUILDING, ANY UNIT, PARKING AREA AND STORAGE AREA DESIGN, SPECIFICATIONS, FEATURES AND FLOOR PLANS IN ORDER TO MAINTAIN THE HIGH STANDARDS OF THIS DEVELOPMENT OR TO COMPLY WITH MUNICIPAL REQUIREMENTS. THE SQUARE FOOTAGE AND ROOM DIMENSIONS ARE BASED ON ARCHITECTURAL DRAWINGS AND MEASUREMENTS. THE LOCATION OF UTILITIES MAY NOT BE ACCURATELY DEPICTED HEREIN. FURNITURE LAYOUTS DEPICT STANDARD FURNISHING SIZES AND ARE INTENDED FOR REFERENCE ONLY. ALL SIZES AND DIMENSIONS ARE APPROXIMATE AND ACTUAL AREA AND DIMENSIONS MAY VARY FROM THE PRELIMINARY PLANS TO THE FINAL SURVEY. ERRORS AND OMISSIONS EXCEPTED. IN THE EVENT OF DISCREPANCY BETWEEN THE MARKETING DOCUMENTS AND THE PURCHASE CONTRACT, THE PURCHASE CONTRACT WILL PREVAIL.

FLOOR PLAN - A

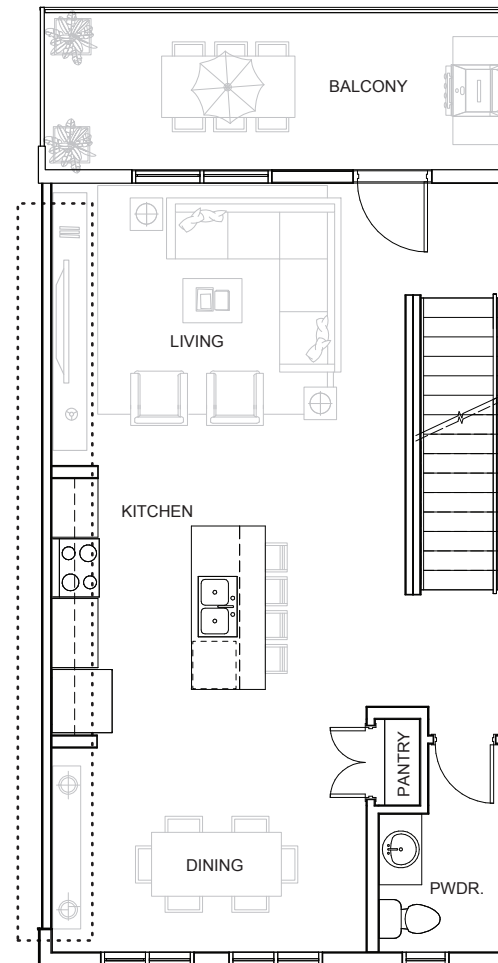
3/4 BED • 2.5 BATH

±1,571 – 1,634 SQ.FT.

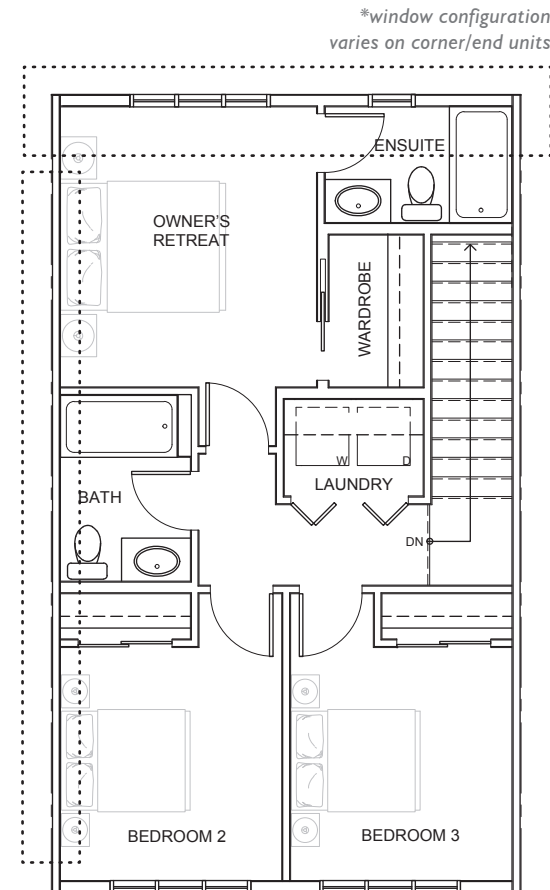
NOVELLA II



GROUND LEVEL ±211 SQ. FT.



MAIN LEVEL ±680 SQ. FT.



UPPER LEVEL ±680 SQ. FT.

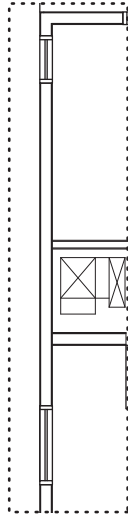
REF. C

THE DEVELOPER AND BUILDER RESERVE THE RIGHT TO MAKE MODIFICATIONS AND CHANGES TO THE BUILDING, ANY UNIT, PARKING AREA AND STORAGE AREA DESIGN, SPECIFICATIONS, FEATURES AND FLOOR PLANS IN ORDER TO MAINTAIN THE HIGH STANDARDS OF THIS DEVELOPMENT OR TO COMPLY WITH MUNICIPAL REQUIREMENTS. THE SQUARE FOOTAGE AND ROOM DIMENSIONS ARE BASED ON ARCHITECTURAL DRAWINGS AND MEASUREMENTS. THE LOCATION OF UTILITIES MAY NOT BE ACCURATELY DEPICTED HEREIN. FURNITURE LAYOUTS DEPICT STANDARD FURNISHING SIZES AND ARE INTENDED FOR REFERENCE ONLY. ALL SIZES AND DIMENSIONS ARE APPROXIMATE AND ACTUAL AREA AND DIMENSIONS MAY VARY FROM THE PRELIMINARY PLANS TO THE FINAL SURVEY. ERRORS AND OMISSIONS EXCEPTED. IN THE EVENT OF DISCREPANCY BETWEEN THE MARKETING DOCUMENTS AND THE PURCHASE CONTRACT, THE PURCHASE CONTRACT WILL PREVAIL.

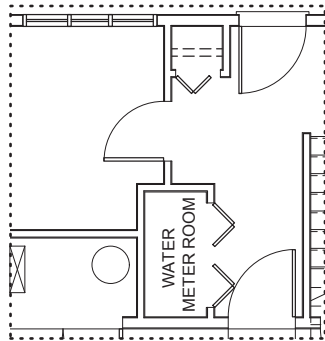
FLOOR PLAN - A
3/4 BED • 2.5 BATH
±1,571 – 1,634 SQ.FT.

NOVELLA
II

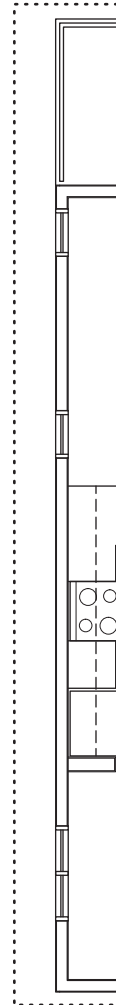
ELEVATION DEPENDENT VARIATIONS



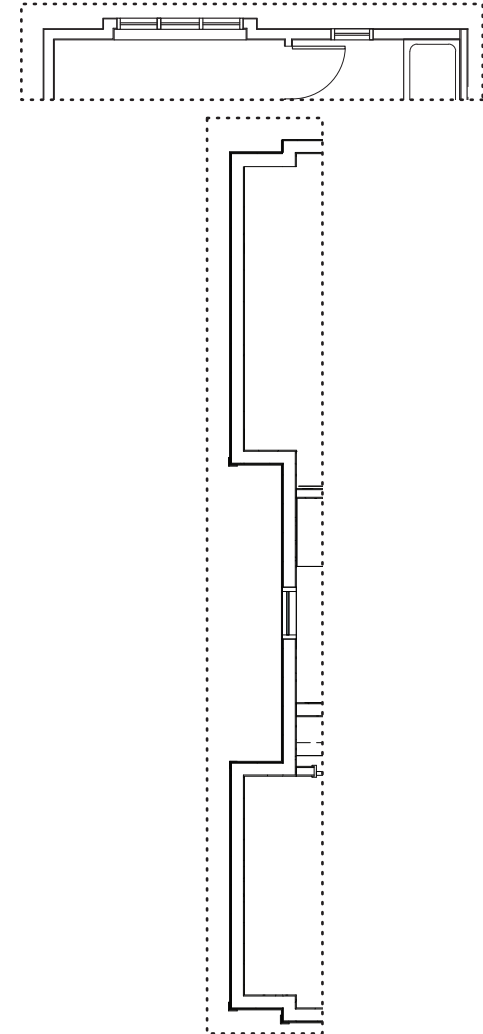
**GROUND LEVEL
END UNIT LAYOUT**



**GROUND LEVEL
WMR UNIT LAYOUT**



**MAIN LEVEL
END UNIT LAYOUT**



**UPPER LEVEL
END UNIT LAYOUTS**

REF. C

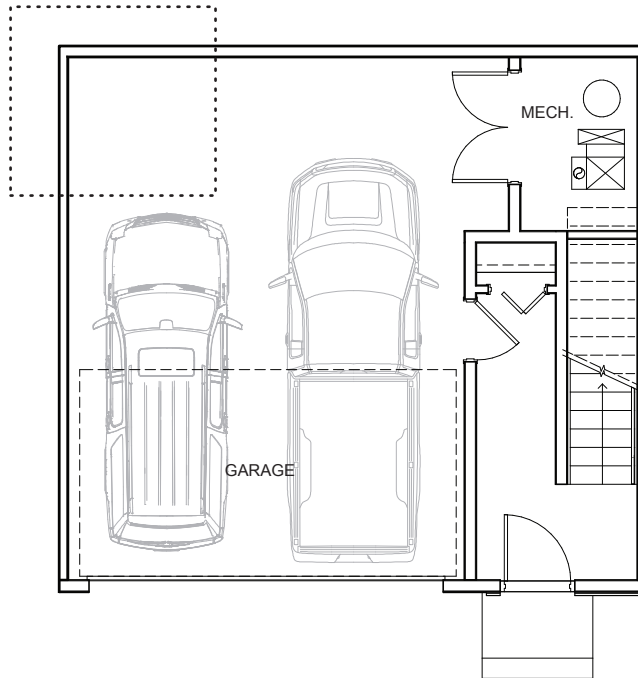
THE DEVELOPER AND BUILDER RESERVE THE RIGHT TO MAKE MODIFICATIONS AND CHANGES TO THE BUILDING, ANY UNIT, PARKING AREA AND STORAGE AREA DESIGN, SPECIFICATIONS, FEATURES AND FLOOR PLANS IN ORDER TO MAINTAIN THE HIGH STANDARDS OF THIS DEVELOPMENT OR TO COMPLY WITH MUNICIPAL REQUIREMENTS. THE SQUARE FOOTAGE AND ROOM DIMENSIONS ARE BASED ON ARCHITECTURAL DRAWINGS AND MEASUREMENTS. THE LOCATION OF UTILITIES MAY NOT BE ACCURATELY DEPICTED HEREIN. FURNITURE LAYOUTS DEPICT STANDARD FURNISHING SIZES AND ARE INTENDED FOR REFERENCE ONLY. ALL SIZES AND DIMENSIONS ARE APPROXIMATE AND ACTUAL AREA AND DIMENSIONS MAY VARY FROM THE PRELIMINARY PLANS TO THE FINAL SURVEY. ERRORS AND OMISSIONS EXCEPTED. IN THE EVENT OF DISCREPANCY BETWEEN THE MARKETING DOCUMENTS AND THE PURCHASE CONTRACT, THE PURCHASE CONTRACT WILL PREVAIL.

FLOOR PLAN - B

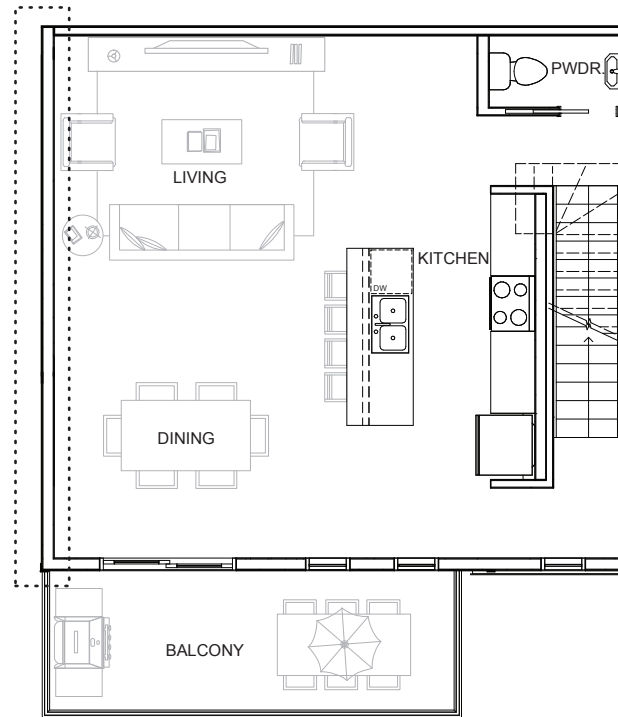
2/3 BED • 2.5 BATH

±1,446 – 1,454 SQ.FT.

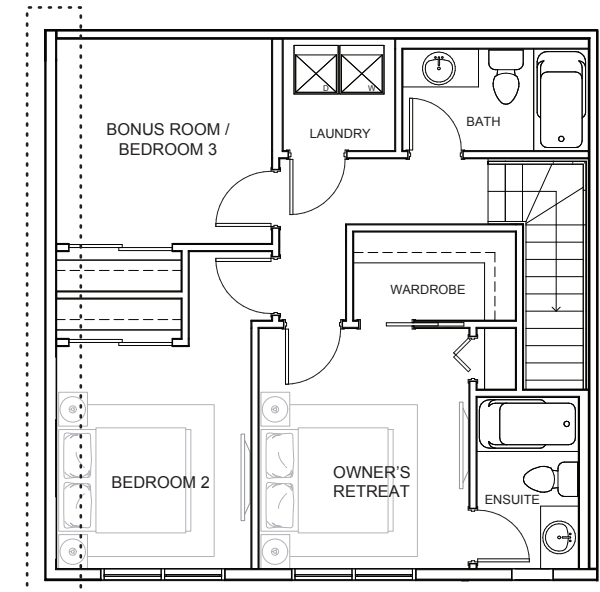
NOVELLA II



GROUND LEVEL ±93 SQ. FT.

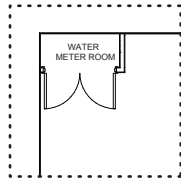


MAIN LEVEL ±650 SQ. FT.

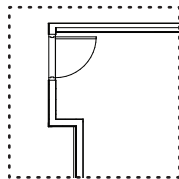


*window configuration
varies on corner/end units

UPPER LEVEL ±703 SQ. FT.



*WMR units



*end units

REF. F

THE DEVELOPER AND BUILDER RESERVE THE RIGHT TO MAKE MODIFICATIONS AND CHANGES TO THE BUILDING, ANY UNIT, PARKING AREA AND STORAGE AREA DESIGN, SPECIFICATIONS, FEATURES AND FLOOR PLANS IN ORDER TO MAINTAIN THE HIGH STANDARDS OF THIS DEVELOPMENT OR TO COMPLY WITH MUNICIPAL REQUIREMENTS. THE SQUARE FOOTAGE AND ROOM DIMENSIONS ARE BASED ON ARCHITECTURAL DRAWINGS AND MEASUREMENTS. THE LOCATION OF UTILITIES MAY NOT BE ACCURATELY DEPICTED HEREIN. FURNITURE LAYOUTS DEPICT STANDARD FURNISHING SIZES AND ARE INTENDED FOR REFERENCE ONLY. ALL SIZES AND DIMENSIONS ARE APPROXIMATE AND ACTUAL AREA AND DIMENSIONS MAY VARY FROM THE PRELIMINARY PLANS TO THE FINAL SURVEY. ERRORS AND OMISSIONS EXCEPTED. IN THE EVENT OF DISCREPANCY BETWEEN THE MARKETING DOCUMENTS AND THE PURCHASE CONTRACT, THE PURCHASE CONTRACT WILL PREVAIL.

THE HOMES

- Contemporary imported high gloss ceramic floor tile, with custom set full height kitchen backsplashes
- A choice of high quality luxury wide plank flooring with acoustic underlay throughout main living area
- In-suite technology featuring integrated wiring, TV / Telephone connections in principal areas
- Convenient and ultra-quiet in-suite Energy Star Front load stacking Washer and Dryer vented to the exterior, with quick water shut off valve, and an easy access lint trap (*only as required*)
- Brilliant lighting: stay illuminated with our hand-picked energy efficient contemporary light fixtures throughout
- Smooth panel doors with levered anti scuff and scratch door hardware throughout
- Modern sleek line profiled painted baseboards, door frames and casings, with a dent free fiberglass front door
- Ample Glide Free™ closet shelving and storage shelving (*as per plan*)
- Complete security system rough-in for keypad and motion (*rough-in only*)
- Hardwired carbon monoxide and smoke detectors
- G.F.I. Protected electrical outlets in bathrooms
- Approximately 8 –9ft ceilings throughout, featuring energy saving high performance windows

THE DEVELOPMENT

- Built by multiple Customer Choice Award Winner for highest customer satisfaction, Truman
- Peace of mind provided through our comprehensive warranty program: 1 Year on Workmanship & Materials, 2 Year Warranty of Delivery & Distribution Systems, 5 Year Building Envelope Coverage, and a 10 Year Structural Warranty
- Comprehensive coverage including deposit payments are protected by the Alberta New Home Warranty Program
- Individual suite utility metering for maximum energy savings, coupled with individual programmable thermostat for temperature control

THE BATHROOMS

- Eased edge polished Quartz counter tops
- Modern square edge tubs with sloping lumbar support with upgraded contemporary tiles reveal a luxe spa atmosphere
- TruSpace™ vanity design for maximum storage
- Chrome plumbing fixtures with porcelain undermount sink
- Porcelain comfort height toilets
- Coordinating bathroom hardware and accessories
- Environmentally conscious WaterSense fixtures, shower heads, and toilets
- Safety and pressure-balancing mixing valves for tub and showers for well-being

ENERGY EFFICIENCY

- High efficiency furnace with Drip humidifier
- All duct work is professionally cleaned before possession
- 50 Gallon energy saver electric hot water tank
- R-50 loose fill attic insulation for ultimate comfort
- Spray foam insulation in all cold areas under living spaces
- Formaldehyde-free batt insulation & expanding insulation in between all windows and doors
- Industry leading party wall detailing

THE KITCHENS

- Award winning kitchen cabinetry design
- Floor to ceiling ergonomic TRUspace™ contemporary kitchen cabinetry; textured finishes, accented by soft close door and drawer hardware plus integrated storage
- Polished Quartz hard surface eased edge countertops
- Under-mount double bowl sink with industrial high arc single lever pull out faucet
- Full height tile kitchen backsplashes
- Gleaming Foundry™ custom made full height door hardware as per selections
- For the chef; stainless steel energy saving integrated appliances (fridge, oven, glass-top stove, dishwasher, hood fan / microwave OTR)
- Deep drawer for pots and pans



L.A. COLOUR SELECTION

- 1 FLOORING**
LVP – Divine Quest Willow XL
(main level)
- 2 LVT** – Divine Passage Cleopatra
(entry areas / laundry / bathrooms)
- 3 TILE**
White Subway Tile
(kitchen back splash / vanities / shower walls)
- 4 CARPET**
Shaw Vastly Pearl
(stairs / upper hallway / bedrooms)
- 5 COUNTERTOPS**
Quartz – GS Imports Glacier White
(kitchen / bathrooms)
- 6 CABINETS**
White - CHILL (H56)
(kitchen)
- 7 PAINT**
Architectural White C2 – 516
(walls / trim)

STANDARD HARDWARE

DOOR STYLE

Lincoln Park

DOOR HARDWARE

Vega (Chrome)

BASE FINISHING

Baseboard & Casing

BATH HARDWARE

Qube (Chrome)

PLUMBING

Kohler (Chrome) Fixtures