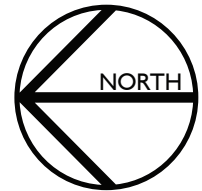


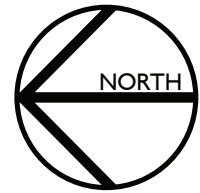
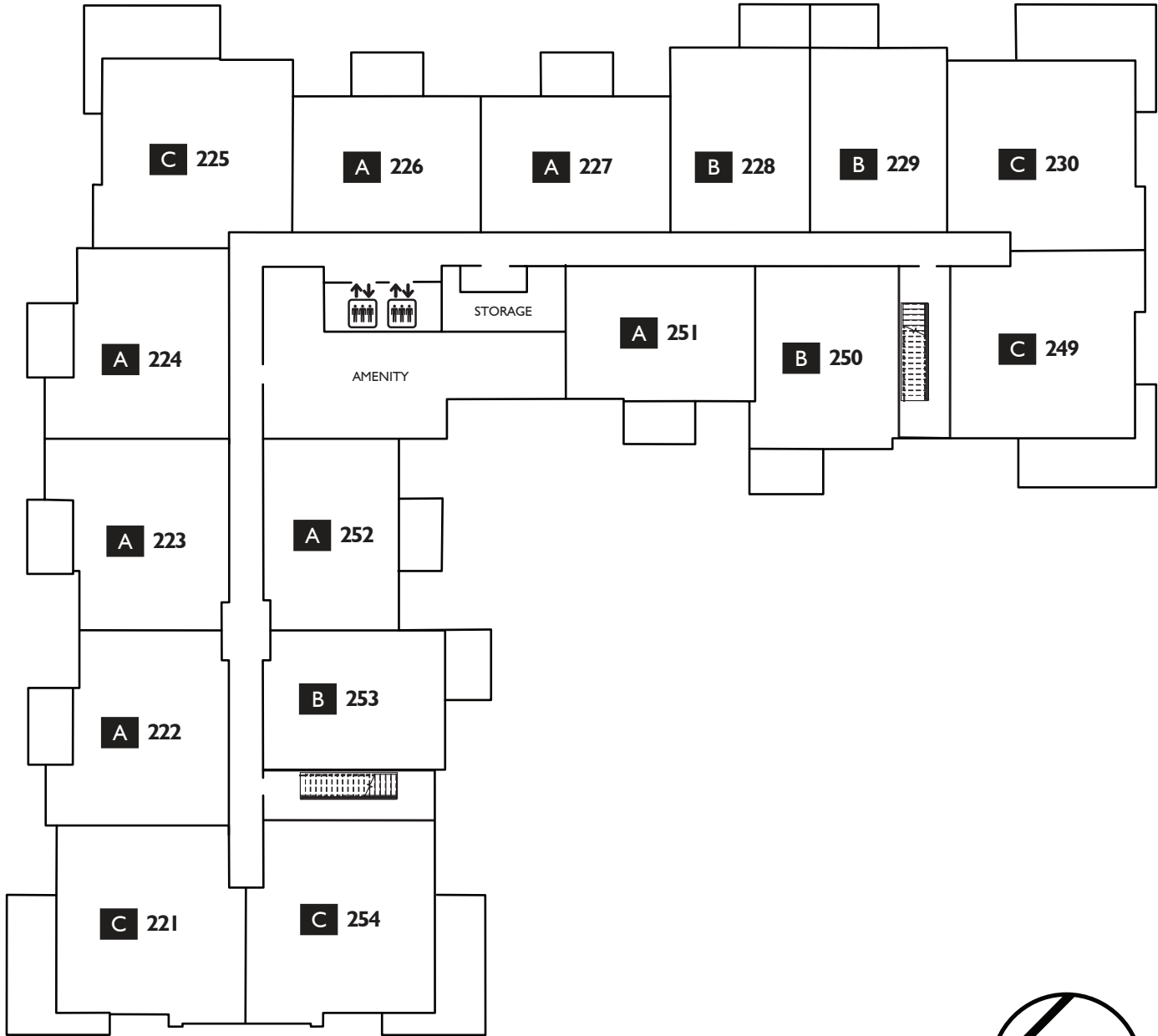


THE DEVELOPER AND BUILDER RESERVE THE RIGHT TO MAKE MODIFICATIONS AND CHANGES TO THE BUILDING, ANY UNIT, PARKING AREA AND STORAGE AREA DESIGN, SPECIFICATIONS, FEATURES AND FLOOR PLANS IN ORDER TO MAINTAIN THE HIGH STANDARDS OF THIS DEVELOPMENT OR TO COMPLY WITH MUNICIPAL REQUIREMENTS. THE SQUARE FOOTAGE AND ROOM DIMENSIONS ARE BASED ON ARCHITECTURAL DRAWINGS AND MEASUREMENTS. THE LOCATION OF UTILITIES MAY NOT BE ACCURATELY DEPICTED HEREIN. FURNITURE LAYOUTS DEPICT STANDARD FURNISHING SIZES AND ARE INTENDED FOR REFERENCE ONLY. ALL SIZES AND DIMENSIONS ARE APPROXIMATE AND ACTUAL AREA AND DIMENSIONS MAY VARY FROM THE PRELIMINARY PLANS TO THE FINAL SURVEY. ERRORS AND OMISSIONS EXCEPTED. IN THE EVENT OF DISCREPANCY BETWEEN THE MARKETING DOCUMENTS AND THE PURCHASE CONTRACT, THE PURCHASE CONTRACT WILL PREVAIL.



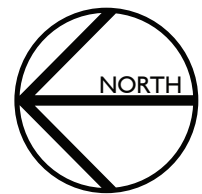
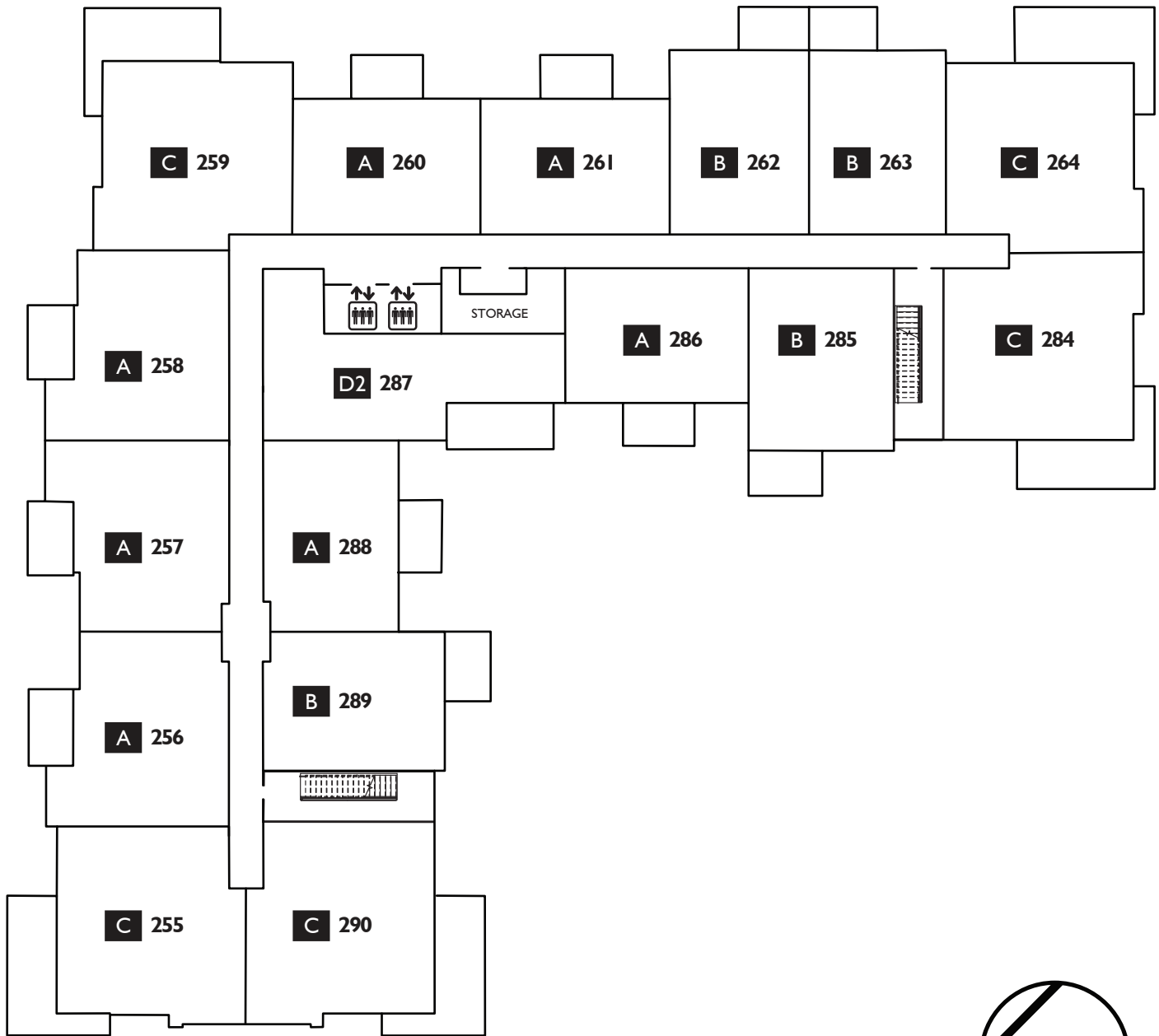
# TEMP. REF. UNIT #

T FLOOR PLAN



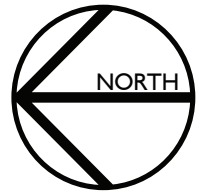
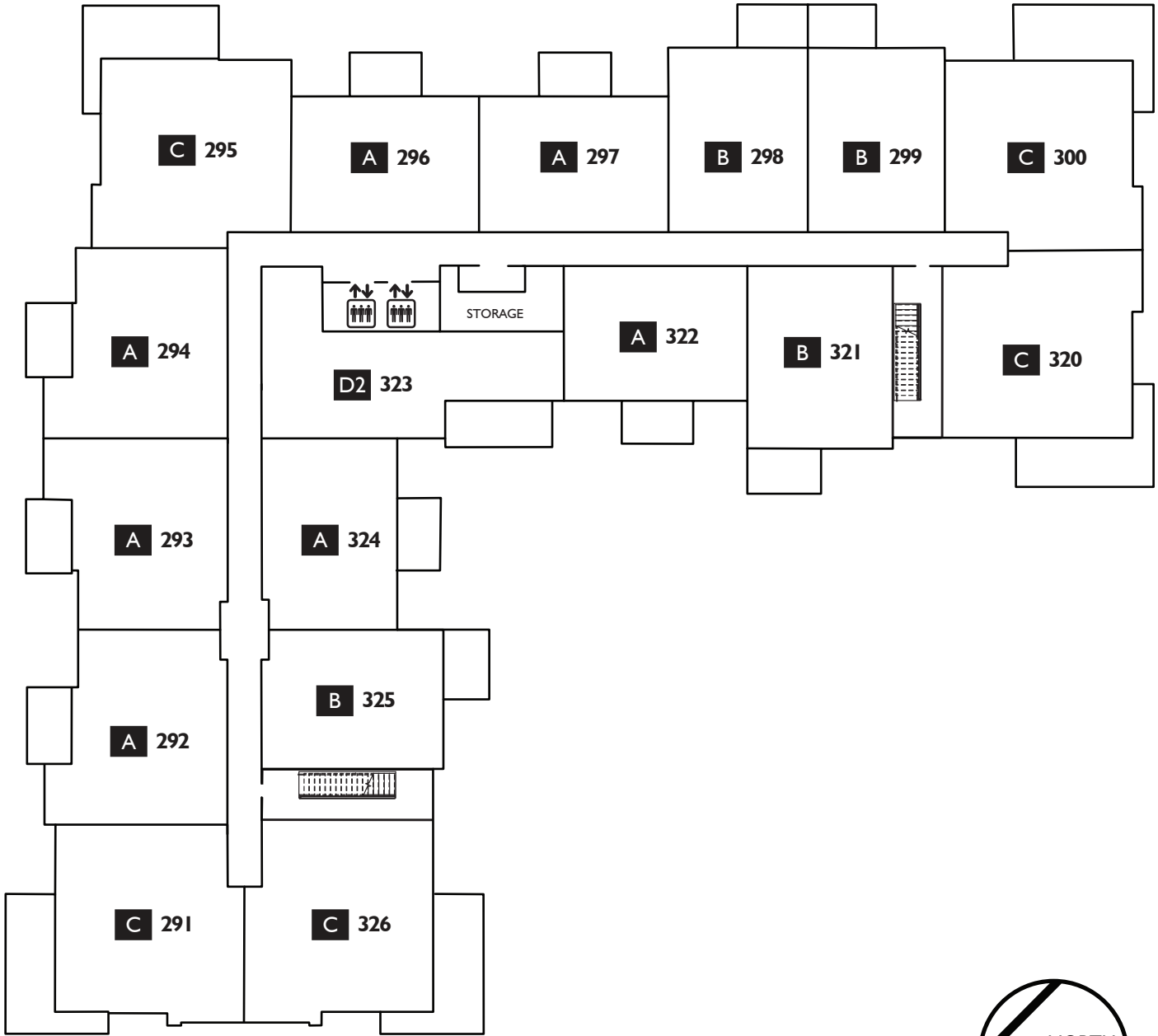
# TEMP. REF. UNIT #

T FLOOR PLAN



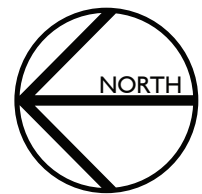
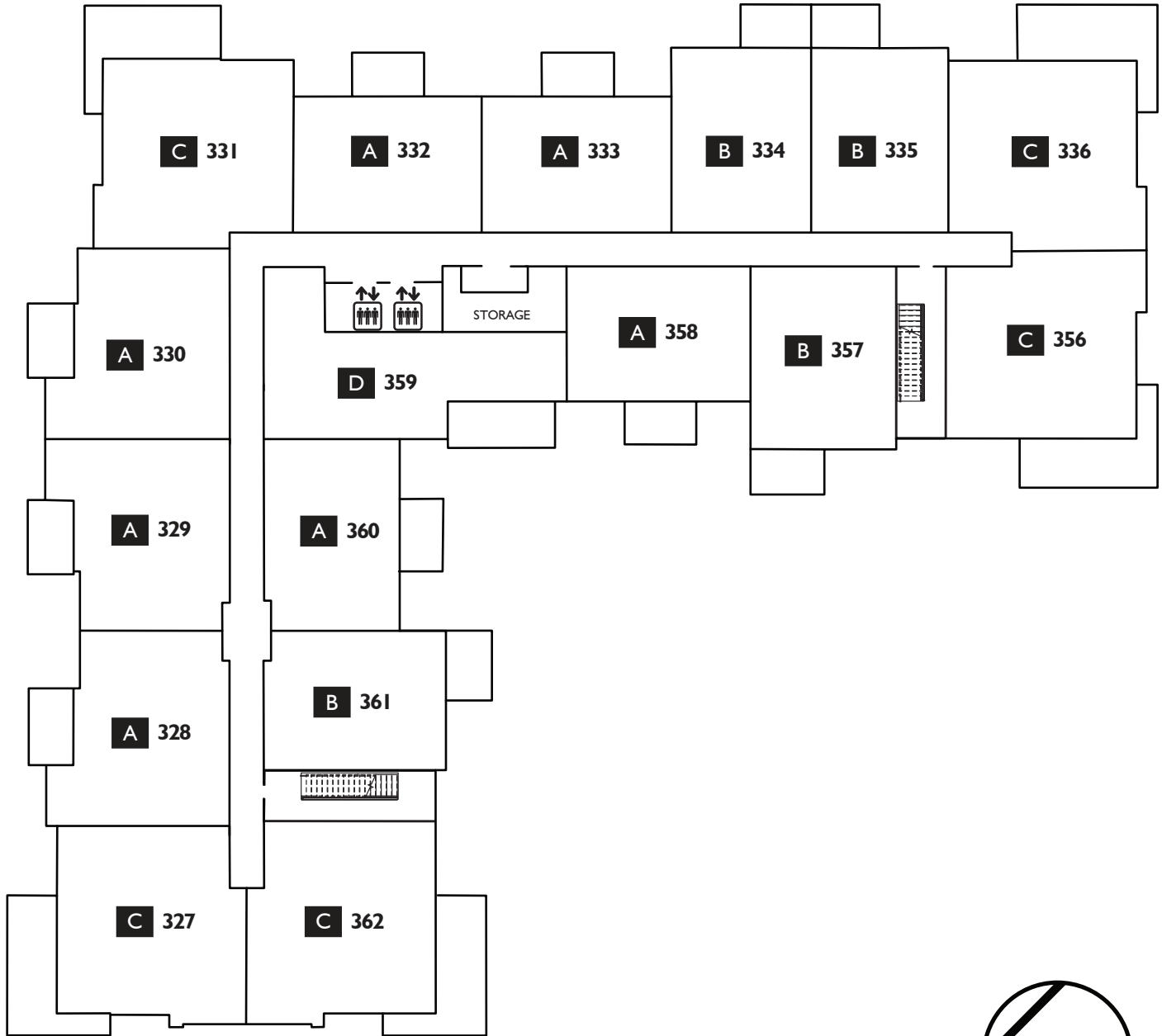
# TEMP. REF. UNIT #

T FLOOR PLAN



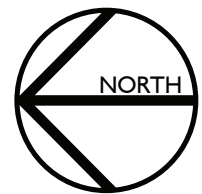
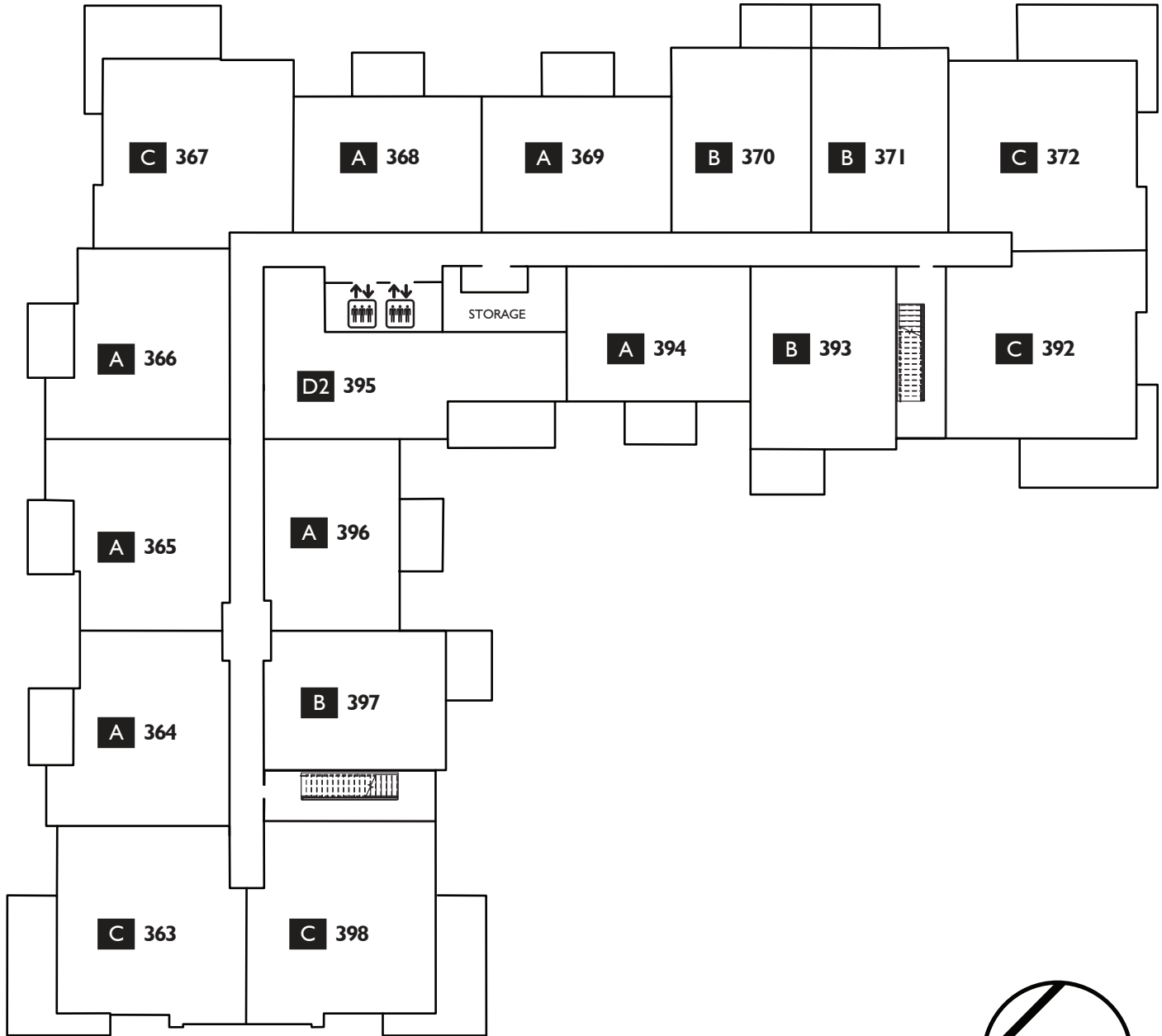
# TEMP. REF. UNIT #

T FLOOR PLAN



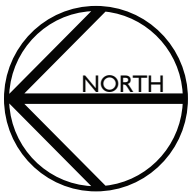
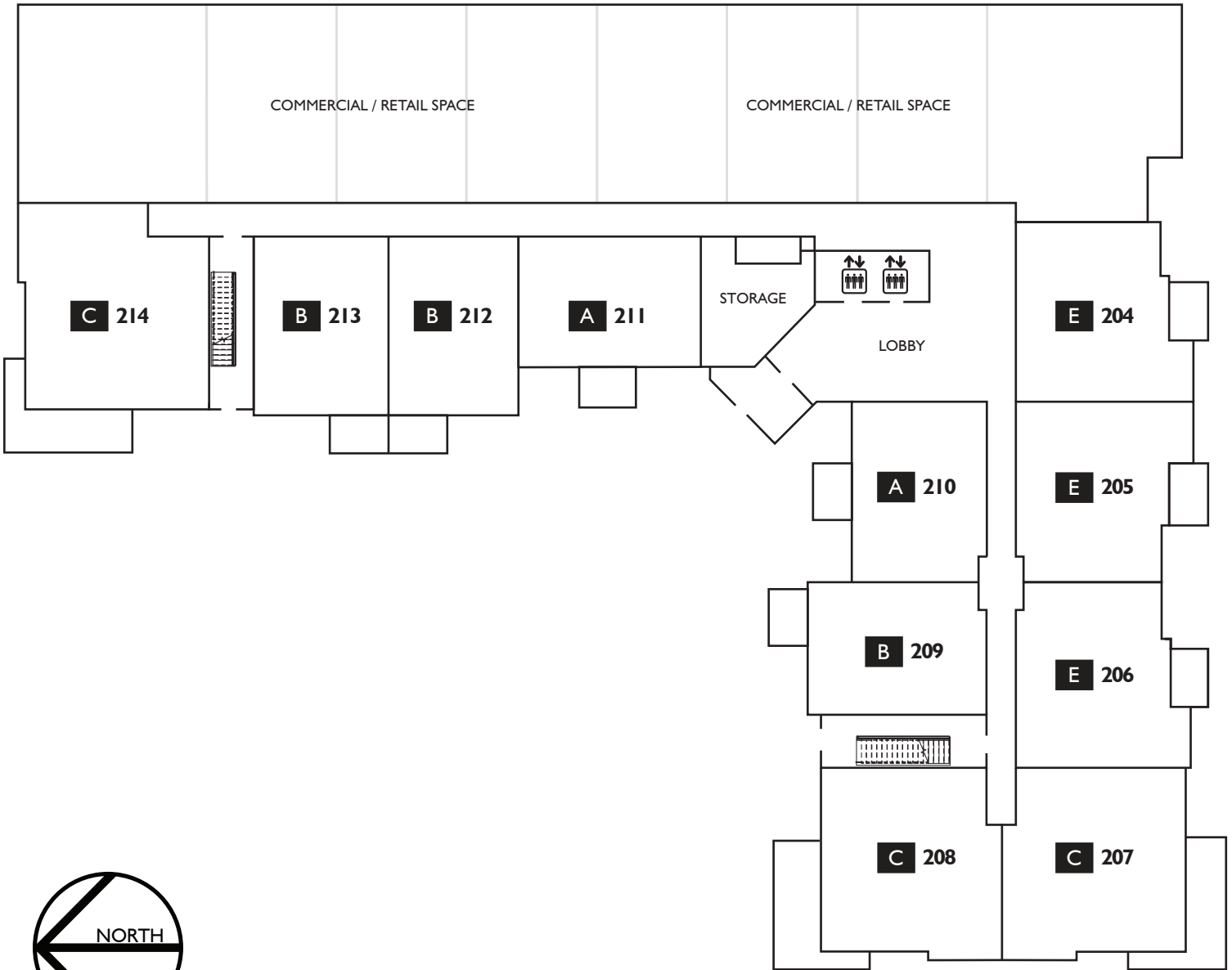
# TEMP. REF. UNIT #

T FLOOR PLAN



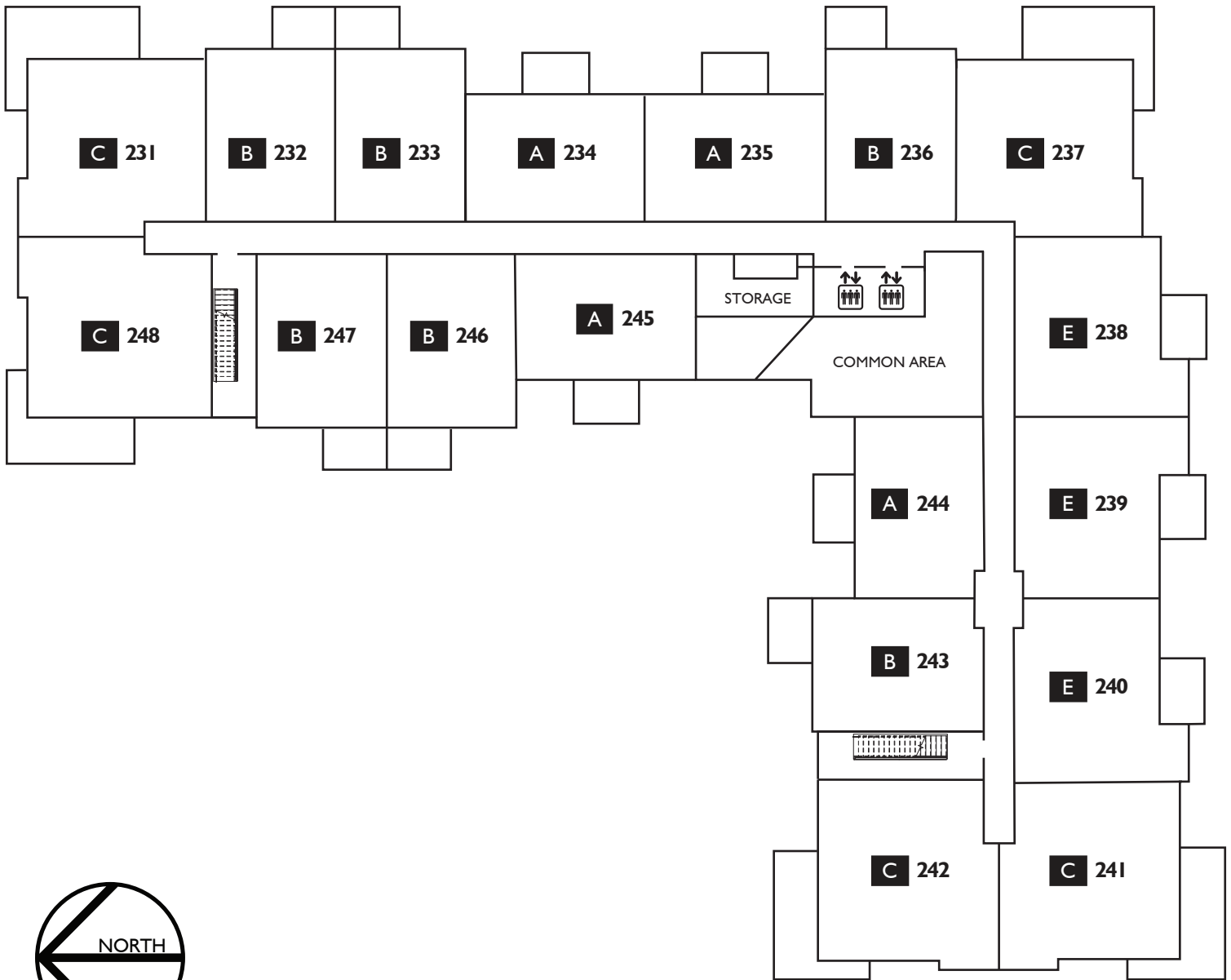
# TEMP. REF. UNIT #

T FLOOR PLAN



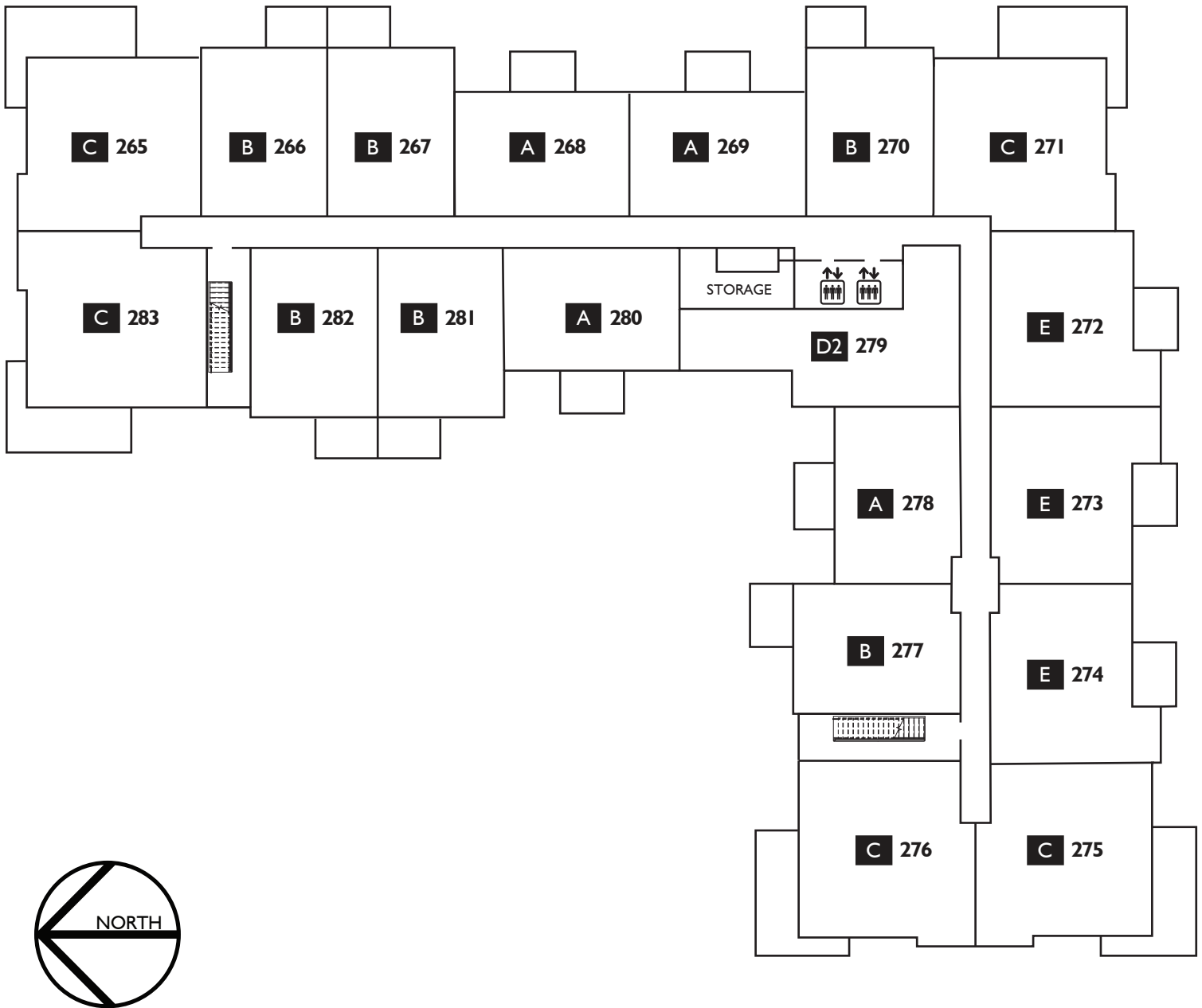
# TEMP. REF. UNIT #

T FLOOR PLAN



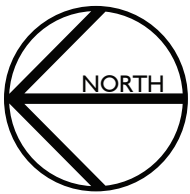
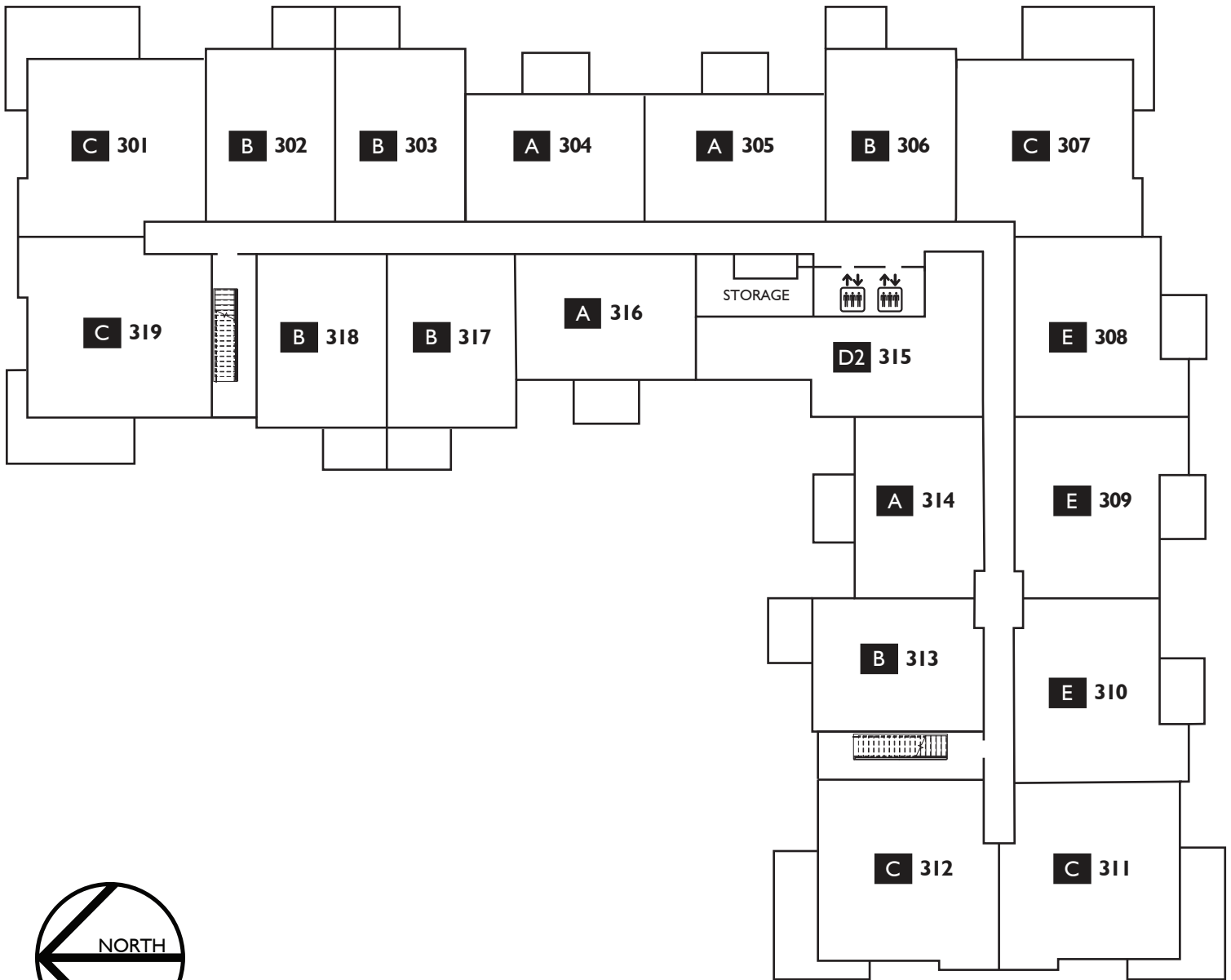
# TEMP. REF. UNIT #

T FLOOR PLAN



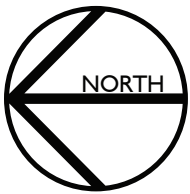
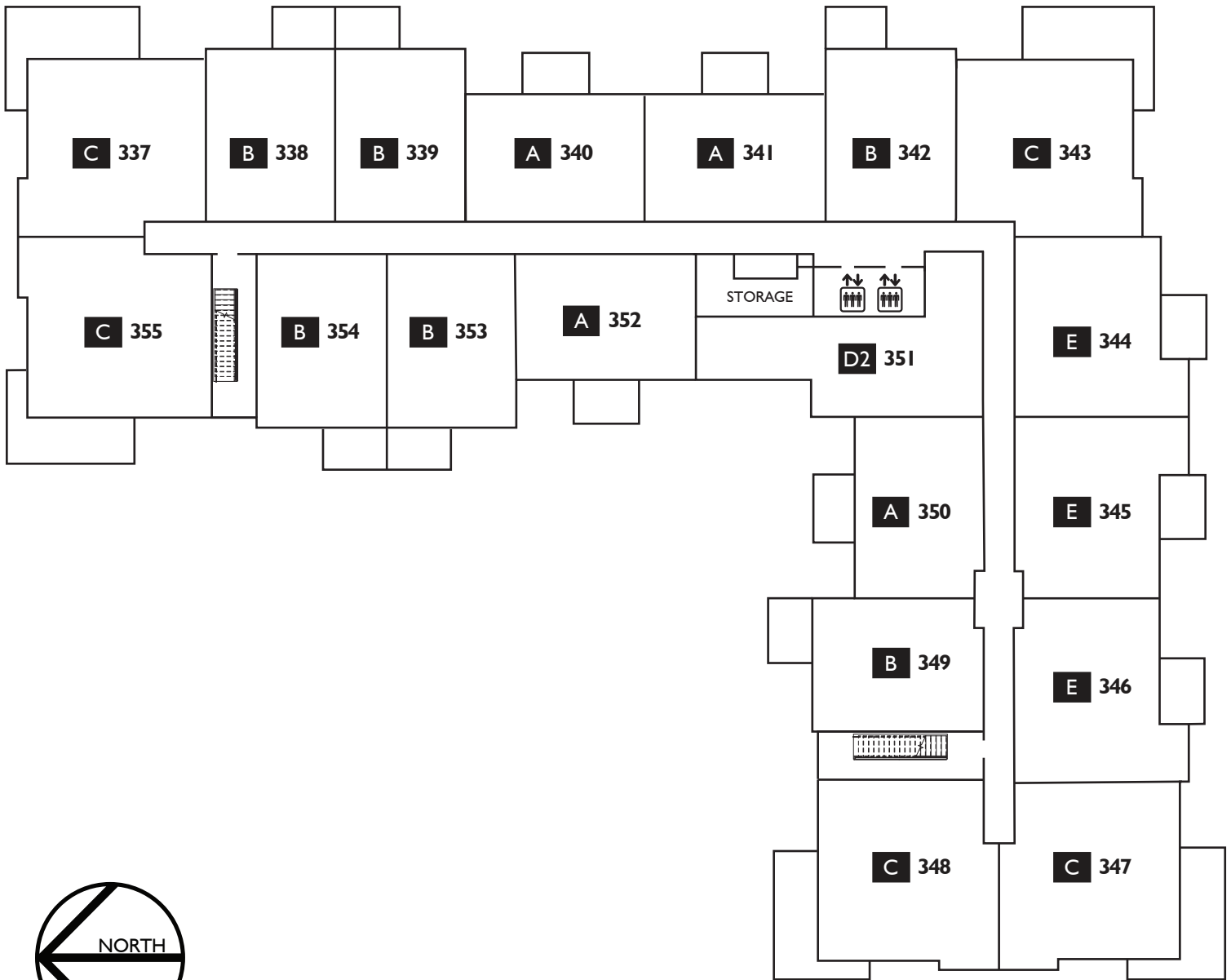
# TEMP. REF. UNIT #

T FLOOR PLAN



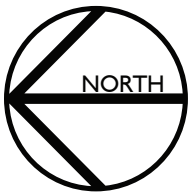
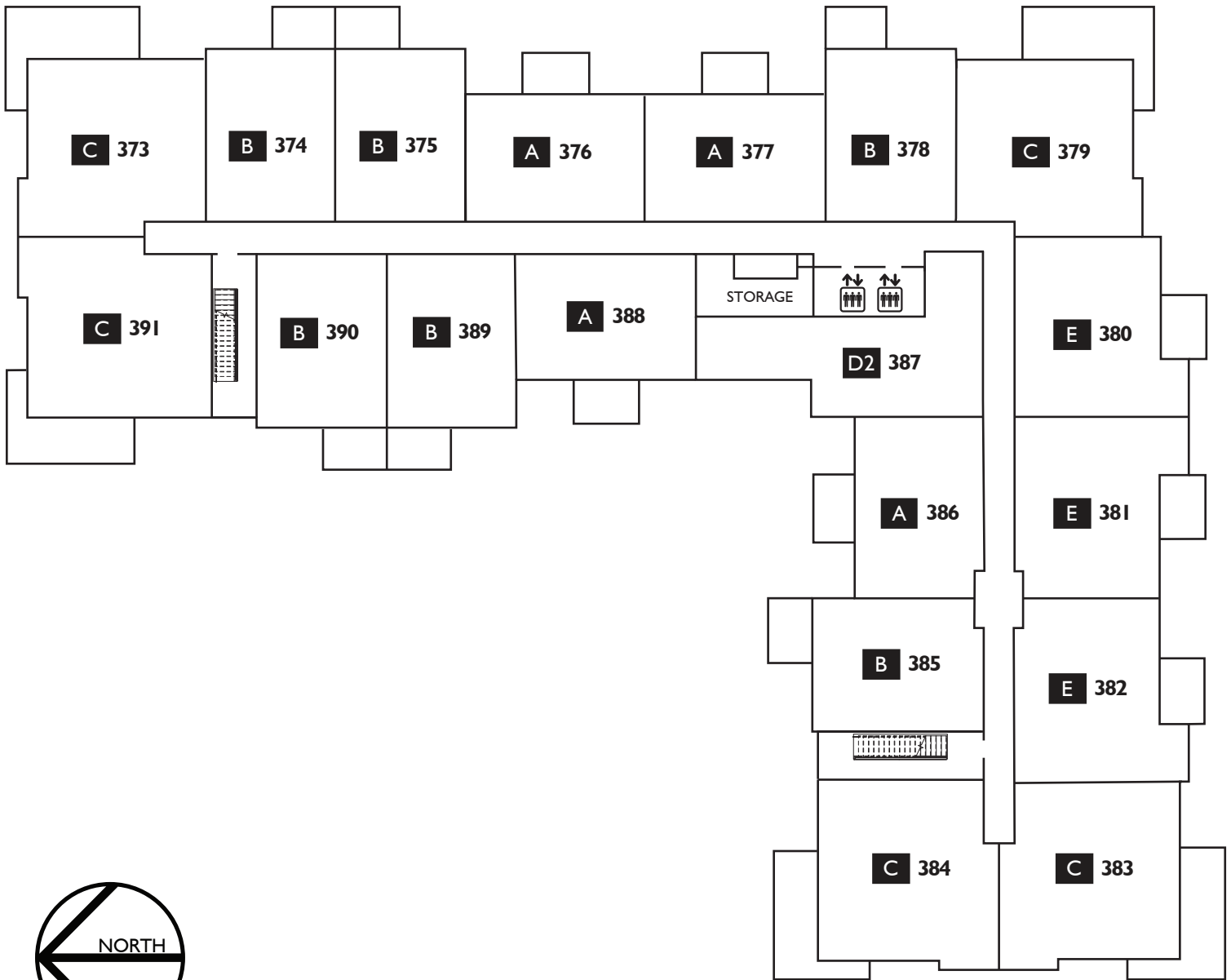
# TEMP. REF. UNIT #

T FLOOR PLAN



# TEMP. REF. UNIT #

T FLOOR PLAN



# TEMP. REF. UNIT #

T FLOOR PLAN

## L.A. COLOUR

### Flooring

1. LVP – Divine Quest Willow XL
2. LVT – Divine Passage Cleopatra  
*(laundry / bathrooms)*

### Tile Backsplash

3. White Subway Tile  
*(kitchen / shower walls)*

### Countertops

4. Quartz – GS Imports Glacier White  
*(kitchen / bathrooms)*

### Cabinetry

5. Super Matte White *(kitchen)*

### Paint

6. Architectural White C2 – 516 *(walls / trim)*

## N.Y. COLOUR

### Flooring

1. LVP – Divine Quest Freshman
2. LVT – Divine Passage Cleopatra  
*(laundry / bathrooms)*

### Tile Backsplash

3. White Subway Tile  
*(kitchen / shower walls)*

### Countertops

4. Quartz – GS Imports Glacier White  
*(kitchen / bathrooms)*

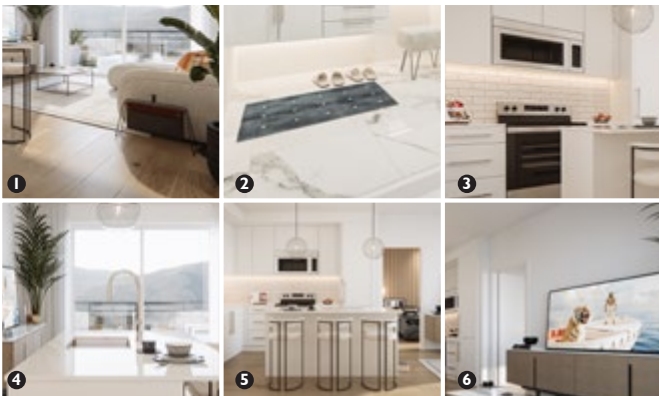
### Cabinetry

5. Grey - Haze (H57) *(kitchen)*

### Paint

6. Architectural White C2 – 516 *(walls/trim)*

OR



**SELECTION:**  
*(Type NY or LA)* \_\_\_\_\_

## THE BUILDINGS

- Built by multiple Customer Choice Award Winner for highest customer satisfaction, Truman
- Peace of mind provided through our comprehensive warranty program:  
1 Year on Workmanship & Materials, 2 Year Warranty of Delivery & Distribution Systems, 5 Year Building Envelope Coverage, and a 10 Year Structural Warranty.
- Energy efficient design including mechanical and distribution systems
- Comprehensive coverage including deposit payments are protected by the Alberta New Home Warranty Program
- Maintenance free exteriors featuring private decks, patios and professionally designed and irrigated grounds
- Built-in smoke/heat detectors and in-suite water sprinkler system
- Individual suite utility metering for maximum energy savings, coupled with individual thermostat for temperature control
- Painted, secured, and heated underground parkade with secured storage areas
- Intercom and security monitoring system in lobby

## THE SUITES

- Beautifully appointed interiors by our award-winning interior design team with a choice of 2 timeless interior colour schemes; L.A. and N.Y.
- Approximate  $\pm 9$ ft ceilings throughout suite (*excluding dropped areas required for mechanical, plumbing and/or electrical*)
- Energy efficient windows and oversize doors/patio sliders (*as per plan*)
- Custom designed solid core entry door with security view-hole and custom printed address plate, accented by individual suite lighting fixture at entrance
- High quality luxury vinyl plank flooring with acoustic underlay throughout all living areas, LVT in bath & laundry areas
- In-suite technology featuring integrated wiring panel
- Smart Plug USB plug jack connection, and TV / Telephone connections in principal area
- Convenient and ultra-quiet in-suite Energy Star® front-load stacking washer and dryer centre, vented to the exterior with quick water shut off valve
- Brilliant lighting with our hand-picked energy efficient contemporary light fixtures throughout
- Smooth panel doors with levered anti scuff and scratch Taymor® door hardware throughout
- Modern sleek profiled painted baseboards, door frames & casings
- Ample closet and storage shelving (*as per plan*)

## THE BATHROOMS

- Polished hard surface quartz eased edge countertops
- Modern square edge tubs with sloping lumbar support accented by contemporary tiles, creating a luxe spa atmosphere
- Innovative TRUspace™ integrated storage cabinetry
- TRUspace™ vanity design with maximum storage in mind
- Chrome plumbing fixtures with porcelain sink
- Sterling porcelain toilet
- Matching bathroom hardware and accessories
- Environmentally conscious WaterSense® fixtures, shower heads, and toilets
- Safety and pressure-balancing mixing valves for tub and showers

## THE KITCHENS

- Award winning kitchen cabinetry design by A.B. Cushing Mills with a choice of two colour palettes
- Floor to ceiling ergonomic TRUspace™ contemporary kitchen cabinetry featuring premium finishes, accented by soft close door and drawer hardware and integrated storage
- Polished hard surface quartz eased edge countertops
- Undermount stainless steel sink with industrial high arc single lever pull out faucet
- Contemporary imported off ceramic brick tile with custom set full height kitchen backsplashes
- Gleaming Foundry™ custom made door hardware
- Energy saving Whirlpool® stainless steel appliance package including fridge, dishwasher, microwave with integrated hood fan, and slide-in electric range
- Deep drawer for pots and pan

## THE AMENITIES

- Fitness Centre including weight & spin studio
- Owner's Lounge entertainment/media room
- Dedicated bicycle storage/repair room
- Over ± 12,000 sq.ft. commercial retail space