

BT

BRIARFIELD

TOWNHOMES





RT



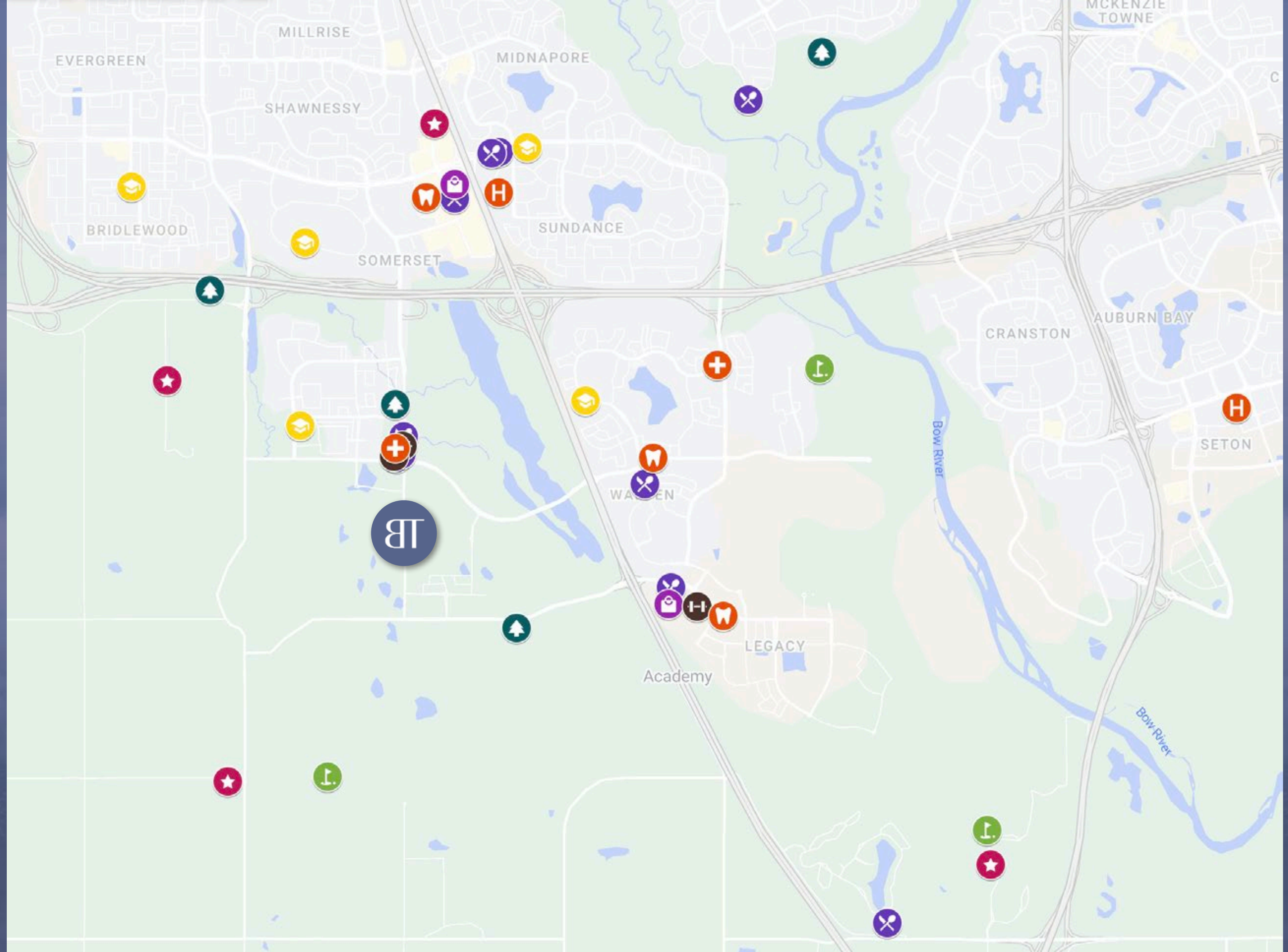
LOCATION



go your own way

Whether you want to bike around the prairie pathways, stroll the neighbourhood while sipping an iced latte, or spend the day at Spruce Meadows rooting for your favourite soccer team – Briarfield has it all – and commuting in and around the neighbourhood proves seamless with pathways weaving through the surrounding areas.

Isn't it nice when everything's just around the corner? With a thoughtfully planned system of paths, parks and a grand boulevard, Wolf Willow is well connected to recreational and social activities, vast open spaces, the Bow River, Fish Creek Provincial Park, Blue Devil Golf Club and more. Easy access to major thoroughfares of Macleod Trail and Stoney Trail, bike paths, bus routes and the nearby Somerset-Bridlewood LRT station make getting around easy at this early stage in development.





LIFESTYLE



POACHEDYYC

19369 SHERIFF KING ST SW | 2 min drive

Come escape the hustle & bustle of your everyday life, Poachedyyc is a hip, licensed breaky spot presenting carefully crafted food and drink items. Check out the modern warehouse design where we deliver the very best in local ingredients inspired by taste and quality.



CATTI FBARON STEAKHOUSE

33 SUN VALLEY BLVD SE | 7 min drive

Recognized as Calgary's premiere casual steakhouse, the CattleBaron offers our guests the finest quality Alberta beef, carefully selected wines, and world famous western hospitality and service. Our AAA-grade steaks are the best of what Alberta beef producers are famous for.



THE CANADIAN BREWHOUSE

80 LONGVIEW COMMON SE | 7 min drive

When you come to The Canadian Brewhouse, you'll feel like you're right at home, because our house is your house...only we have way more TVs! That's right, you won't find a better selection of screens for watching the sports you love anywhere else!





SOUTH CENTRE MALL

100 ANDERSON RD SE | 10 min drive

For almost 50 years, Southcentre Mall has been one of Calgary's favourite shopping destinations. Today, the mall features more than 160 stores, including Calgary exclusives like Crate & Barrel, Restoration Hardware and Decathlon.



SIROCCO GOLF COURSE

210178 64 ST W, FOOTHILLS COUNTY | 5 min drive

Set within 940 acres of family owned land, Sirocco Golf Club is a course that winds its way through the Pine Creek Valley. Designed by Architect Bill Robinson, every hole of the 7185 yard par 72 design offers unique challenges and unparalleled beauty.



SPRUCE MEADOWS

18011 SPRUCE MEADOWS WAY SW | 5 min drive

Spruce Meadows is a multi-purpose sports facility near Calgary, Alberta built by the Southern family which opened in 1975. The facility contains an equestrian show jumping complex that comprises 505 acres.

14

BUILDINGS

92

UNITS

\$480's

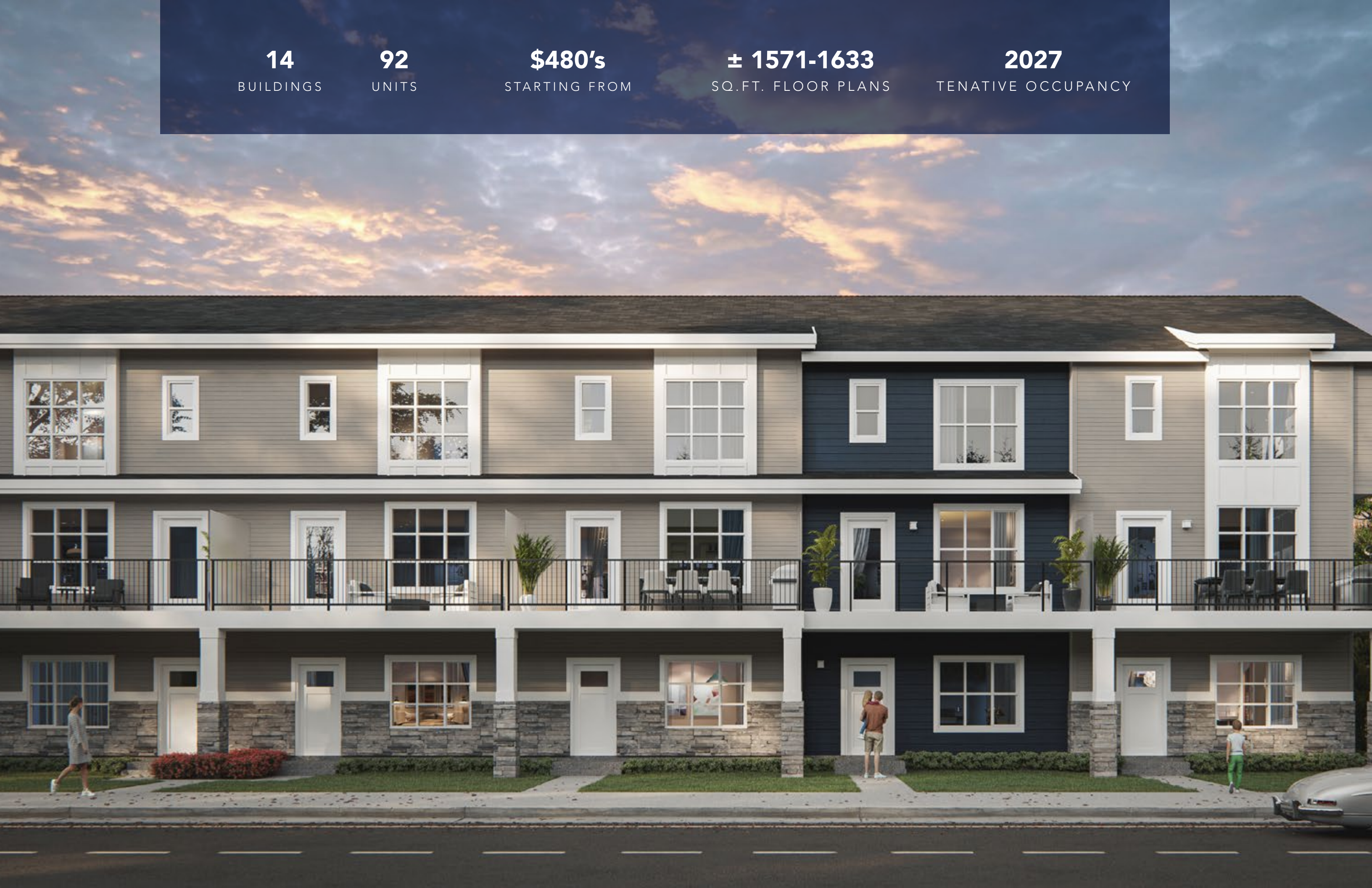
STARTING FROM

± 1571-1633

SQ.FT. FLOOR PLANS

2027

TENATIVE OCCUPANCY





UNIT SPECS

The Buildings

- Peace of mind provided through our comprehensive warranty program: 1 Year on Workmanship & Materials, 2 Year Warranty of Delivery & Distribution Systems, 5 Year Building Envelope Coverage, and a 10 Year Structural Warranty
- Comprehensive coverage including deposit payments are protected by the Alberta New Home Warranty Program
- Built-in smoke/heat detectors and in-suite water sprinkler system
- Individual suite utility metering for maximum energy savings with individual thermostat control

The Suites

- Beautifully appointed interiors by our award-winning interior design team with a choice of 2 timeless interior color schemes
- Approximately 9 FT ceilings throughout suite (excluding dropped areas required for mechanical, plumbing and/or electrical)
- Energy efficient aluminum framed windows and oversize doors/patio sliders (as per plan)
- Brilliant lighting with custom made energy efficient contemporary light fixtures throughout
- Smooth panel doors with levered anti-scuff and scratch door hardware throughout
- Modern sleek line profiled painted baseboards, door frames and casings

The Kitchens

- Floor to ceiling ergonomic TRUspace® contemporary kitchen cabinetry featuring premium finishes, accented by soft close door and drawer hardware and integrated storage
- Polished quartz eased edge countertops
- Stainless steel undermount sink with industrial high arc pull out single lever faucet
- Contemporary imported ceramic tile with custom set full height kitchen backsplashes
- Custom made brushed metal door hardware
- Versatile easy access cutlery drawer
- Deep drawer for pots and pan
- High end energy saving stainless steel appliances including dishwasher, microwave with integrated hood fan, electric stove and integrated fridge

The Bathrooms

- Custom TRUspace™ contemporary kitchen cabinetry featuring soft close doors & drawers, textured finishes and integrated storage
- Polished quartz hard surface eased edge countertops
- Contemporary imported ceramic tile with custom set full height kitchen backsplashes









For over 35 years, Truman has proudly and persistently worked to build a better Calgary. As an Alberta based family-owned developer and builder, we have successfully created thousands of new homes and over a million square feet of retail, office, and industrial space within the Calgary metropolitan area.

Truman's core belief is that everyone can Live better. From master planned new communities to individual mixed-use buildings in redeveloping and developing neighborhoods, we're committed to building great places through great design. Places that so many Calgarians have chosen to make an investment and call home.

BUILDING
CALGARY'S
BEST

