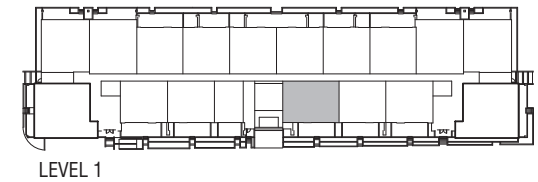
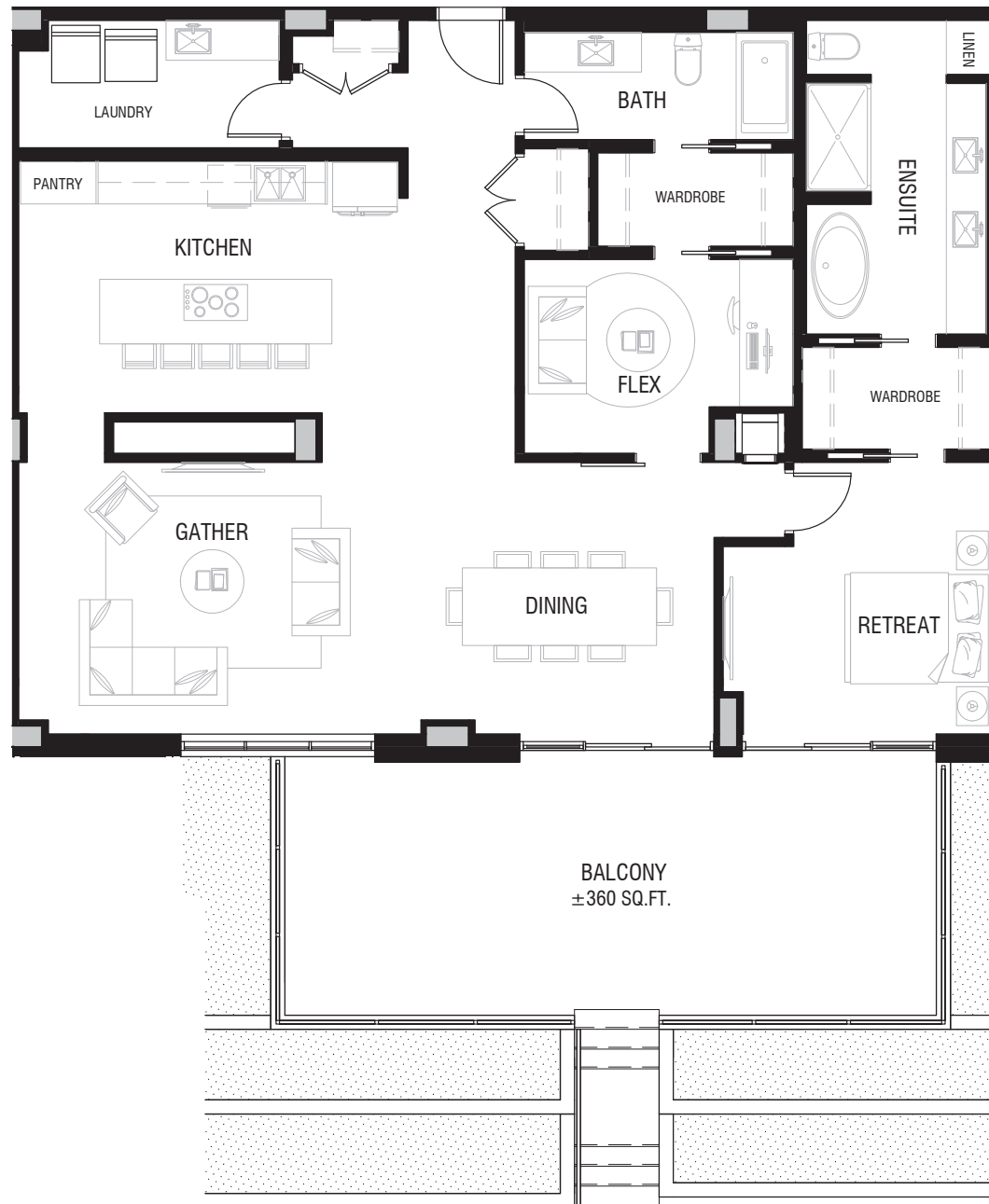
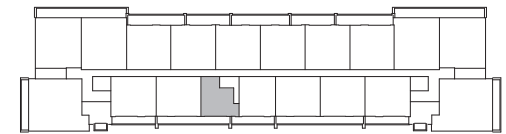
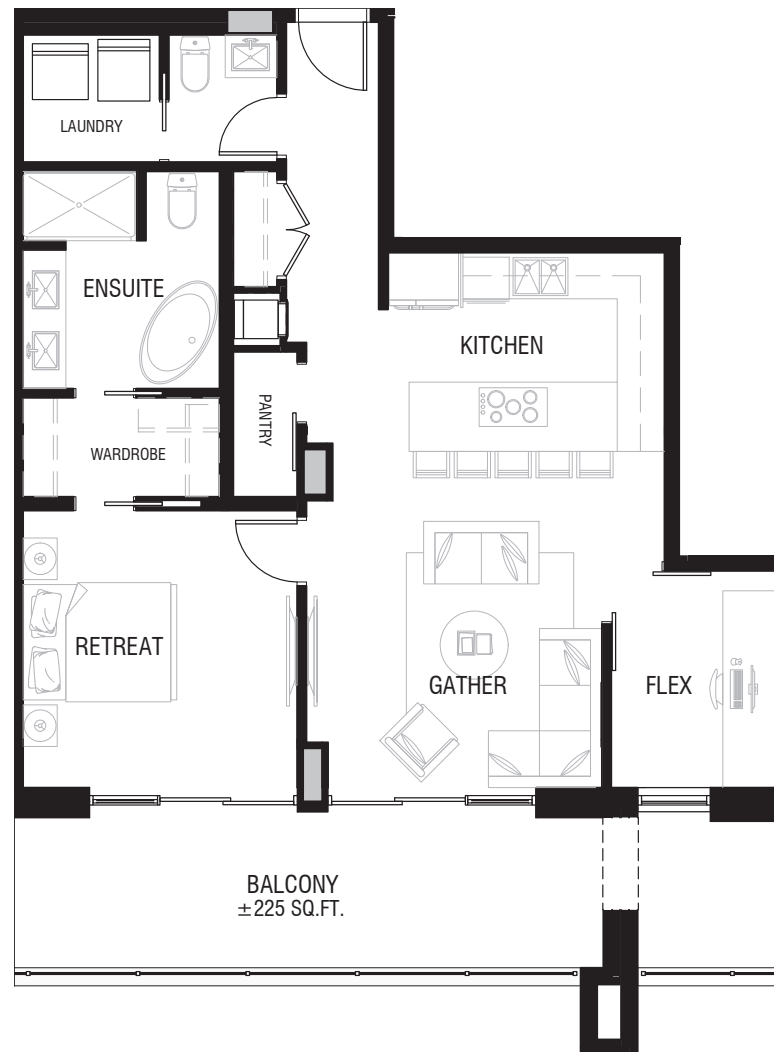
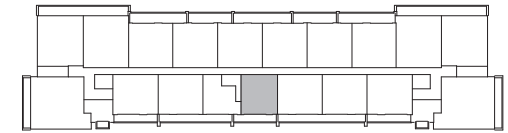


LEVEL 1

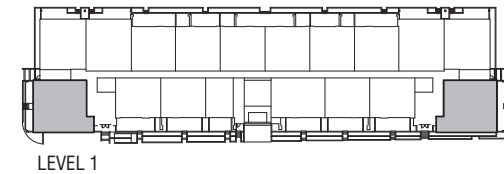


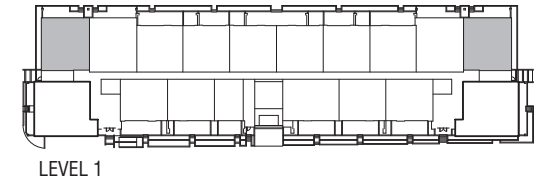


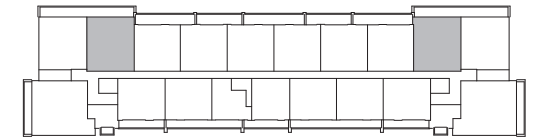
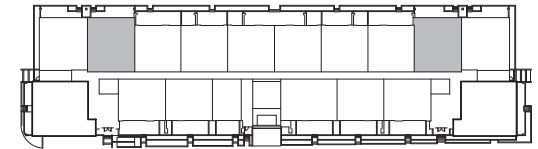
LEVEL 2

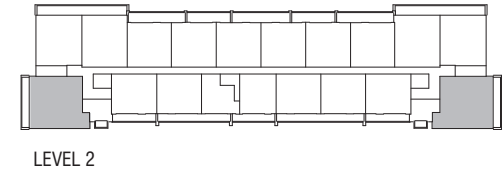


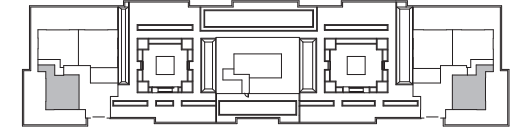
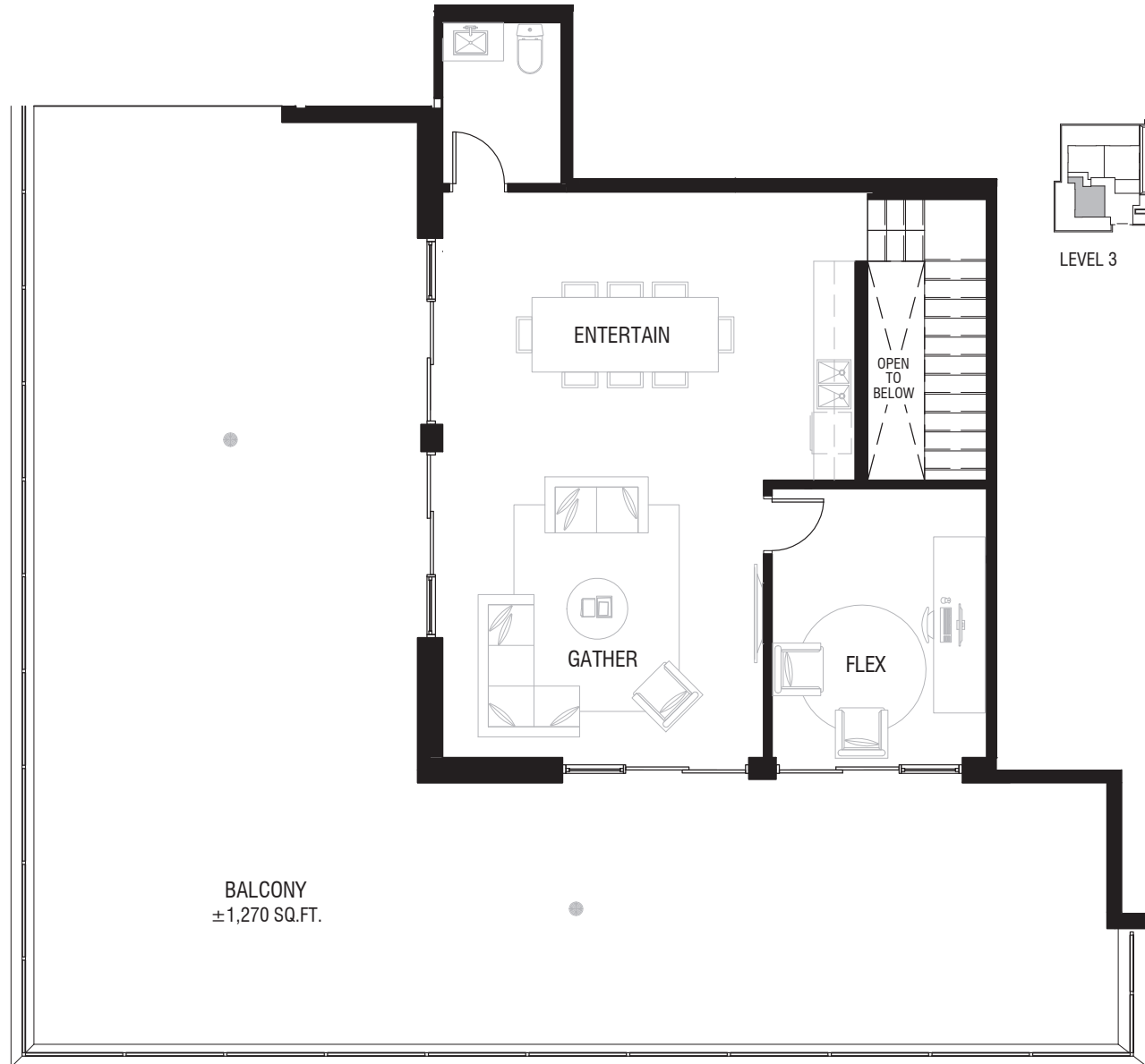
LEVEL 2



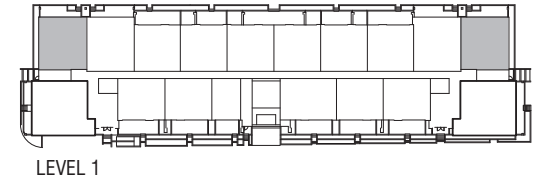


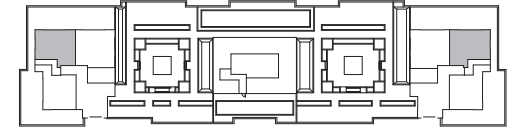
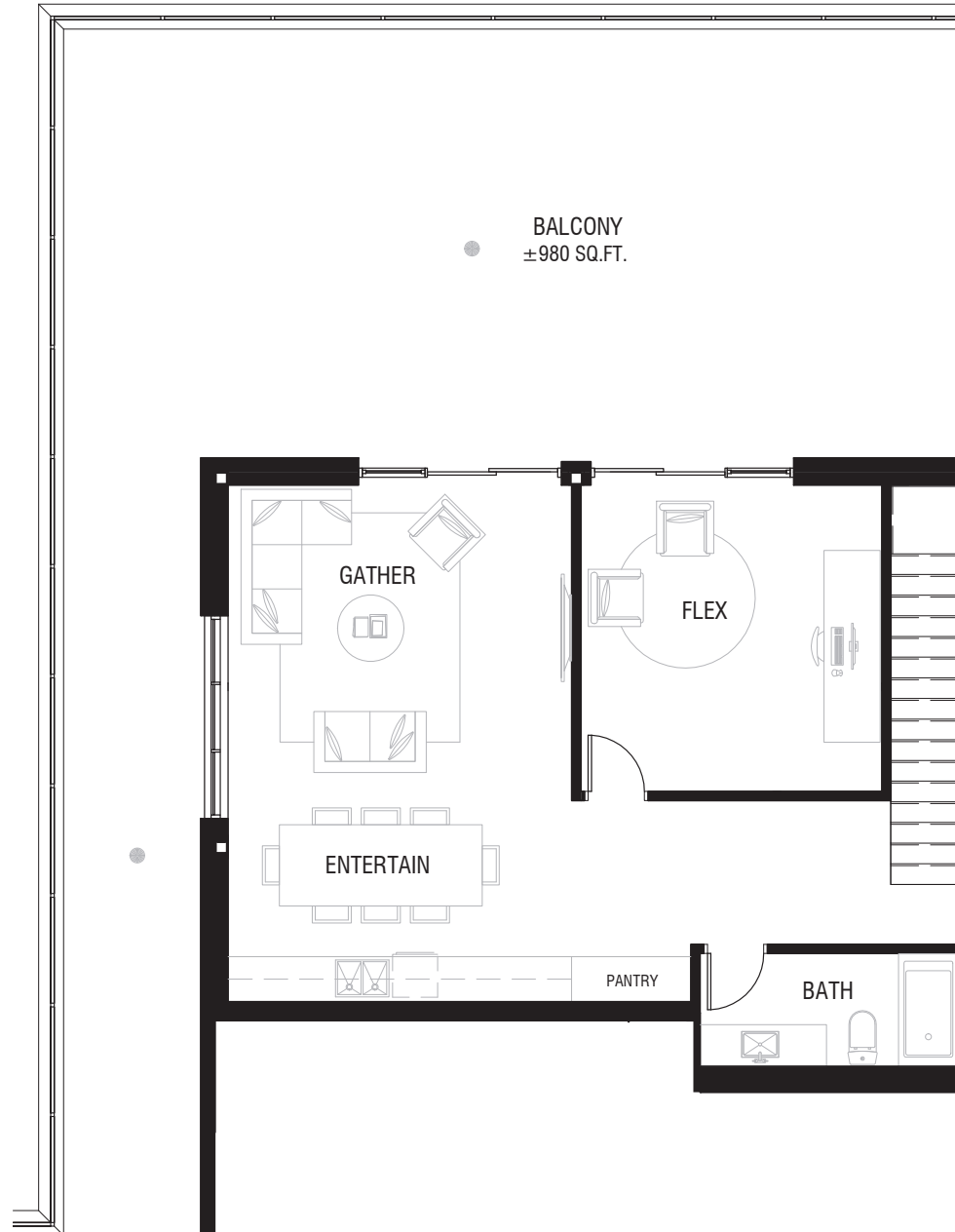




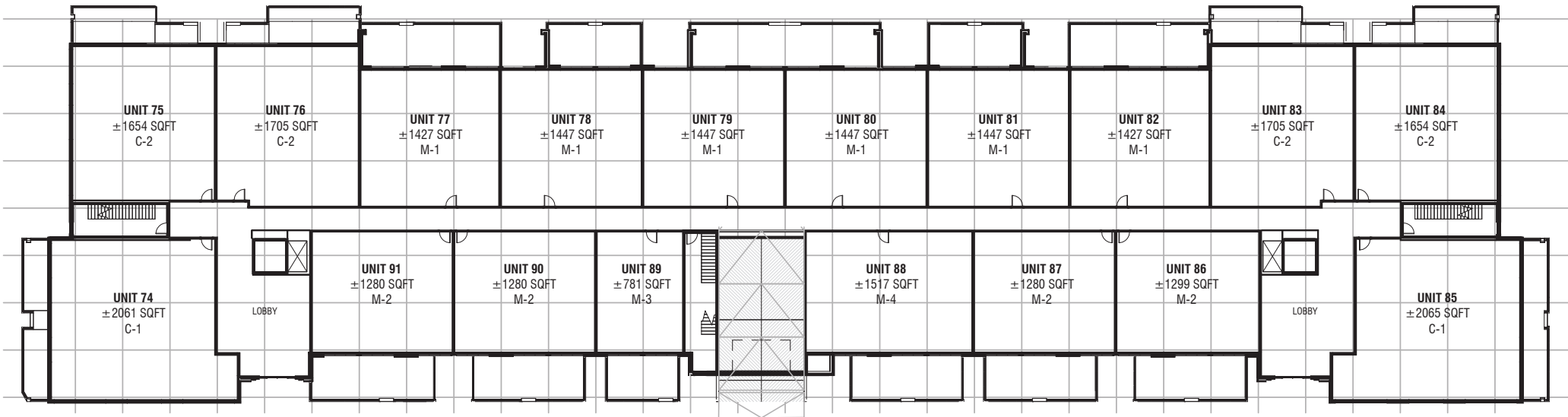


LEVEL 3

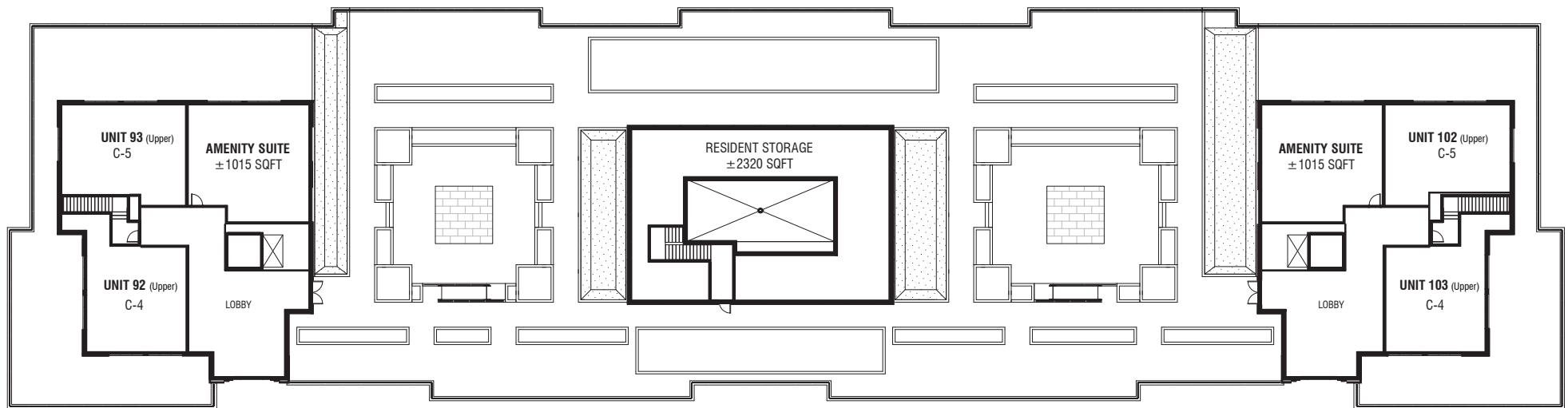


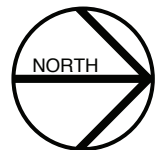
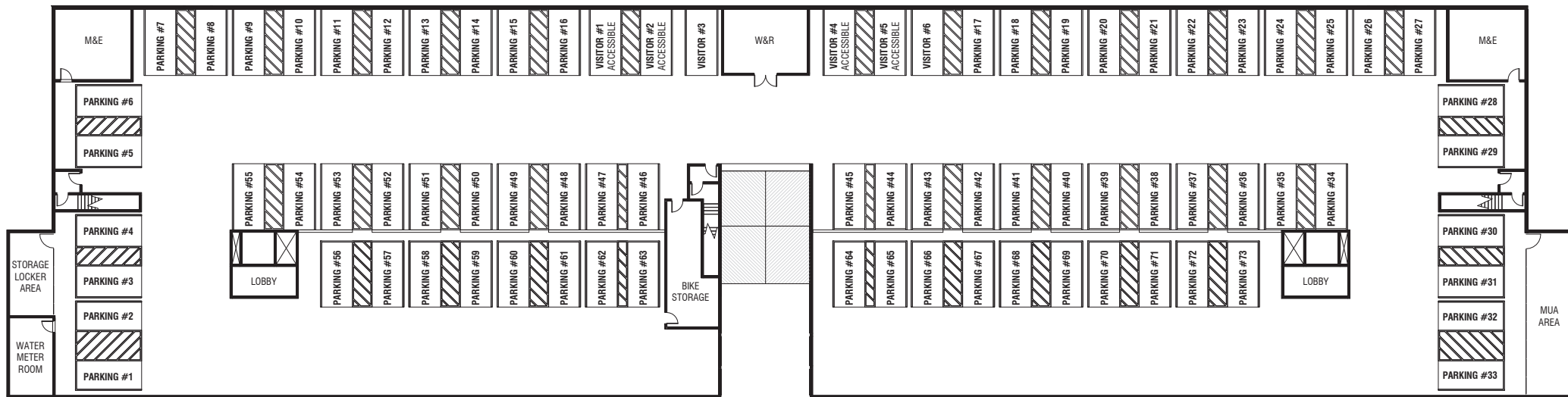


LEVEL 3









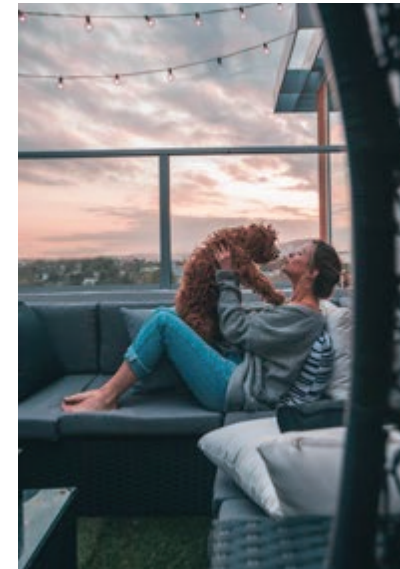
THE BUILDING

- Built by Customer Choice Award Winner for highest customer satisfaction, Truman
- Peace of mind provided through our comprehensive warranty program: 1 Year on Workmanship & Materials, 2 Year Warranty of Delivery & Distribution Systems, 5 Year Building Envelope Coverage, and a 10 Year Structural Warranty.
- Energy efficient building design including mechanical and distribution systems
- Maintenance free exteriors featuring private decks, patios and professionally designed & irrigated grounds
- Concrete construction with industry leading sound attenuation measures



THE AMENITIES

- Outdoor rooftop firepit lounge with dedicated BBQ/dining areas
- Rooftop event lounge with catering kitchen, bathroom and dining areas
- Stunning dual grand entry lobbies
- Rooftop gym/exercise studio
- Secured underground garage with dedicated parking
- Dedicated car, bike and pet washing station
- Digital security cameras for all common areas and keyless FOB entry



THE HOMES

- Air-conditioned homes with smart Universe WiFi enabled thermostat
- Individual suite electricity metering for maximum energy savings
- Built-in smoke/heat detectors and in-suite water sprinkler system
- Contemporary imported high gloss Carrera style ceramic floor tile
- Choice of four interior door styles
- Selection of hand-picked contemporary and energy efficient interior light fixtures
- Smart lighting system: Including 1 smart bridge, 5 wireless dimmer switches, and remote
- Energy efficient aluminum framed exterior windows with oversized doors/patio sliders (*as per plan*) paired with ± 10 ft flat painted ceilings including LED pot lights throughout



THE BATHROOMS

- Individualized bathroom vanities with maximum storage in mind
- Custom tile shower with full height 10mm shower door and matte black hardware
- 1 1/4" quartz countertops, Kohler matte black bathroom hardware & dual porcelain under-mount sinks (*as per plan*)
- Penny round floor tile with custom inlay
- Custom full width vanity mirror
- Kohler porcelain comfort height toilets



THE KITCHENS

- Floor to ceiling custom designed TRUspace® kitchen cabinetry manufactured by A.B Cushing, featuring premium finishes accented by soft close door & drawer hardware with integrated storage
- Integrated cutlery, utensil and spice rack storage inserts including deep drawer for pots and pans (*designed to suit*)
- 1 ¼" quartz countertops, square under-mount Silgranit® sink with industrial high arc single lever faucet
- Energy saving under cabinet LED lighting
- Custom made door hardware (*as per selections*)



THE APPLIANCES

- Fisher & Paykel 36" built-in panel ready refrigerator
- Fisher & Paykel gas cooktop
- Fisher & Paykel ventilation chimney hood
- Fisher & Paykel 30" single electric wall oven
- Fisher & Paykel 24" microwave
- Fisher & Paykel integrated panel ready dishwasher
- Whirlpool electric front load washer & dryer

