

LIMITED TIME  
*Promotion*

Live better.® Live Truman.

**\$35,000**

2020.11.20

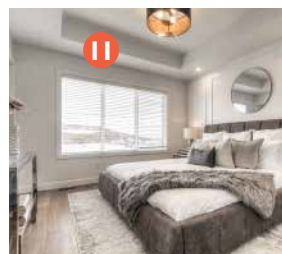
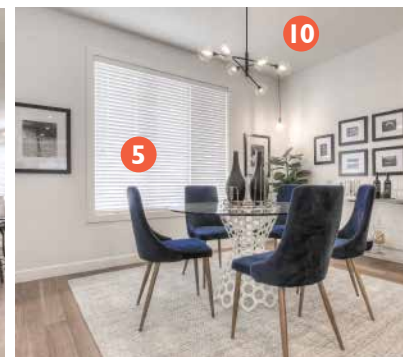
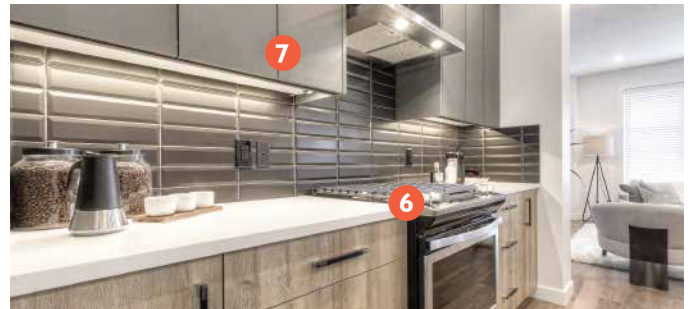
*in* **FREE UPGRADES**

## CHELSEA

CHESTERMERE

Purchase any Single Family Home in Chelsea Chestermere over 1,450 square feet with the *Legacy Specification* and receive these exclusive upgrades:

- 1 Full front yard sod
- 2 Basement upgraded to 9 foot ceilings
- 3 Exterior siding upgraded to Colorsapes® Premium Siding
- 4 Garage ready concrete parking pad (*size determined by lot*)
- 5 Oversized high performance windows
- 6 Whirlpool stainless steel appliance package with gas stove
- 7 Full height kitchen cabinetry, soft close doors & drawers, under cabinet lighting and 1/4" Quartz countertops throughout
- 8 LED pot lights (6)
- 9 Wide plank Maestro Oak Operetta laminate floors throughout main floor
- 10 Knockdown texture ceilings throughout
- 11 Box up ceiling in master bedroom (*second floor*)
- 12 Dual vanity sinks with TRUspace® cabinetry design in ensuite (*model dependent*)
- 13 Tile ensuite shower wall and floors with freestanding tub (*model dependent*)
- 14 12" x 24" porcelain tile in front entry, back entry, laundry, main bath and ensuite
- 15 Full height tile shower surrounds
- 16 Gas BBQ line to rear



**CONTACT: RUDY MOORTGAT | C: 403.619.8337 | E: RUDY@TRUMANHOMES.COM**

THIS DOCUMENT IS FOR DISCUSSION PURPOSES ONLY. THE DEVELOPER AND BUILDER RESERVE THE RIGHT TO MAKE MODIFICATIONS AND CHANGES TO THE BUILDING, ANY UNIT, PARKING AREA AND STORAGE AREA DESIGN, SPECIFICATIONS, FEATURES AND FLOOR PLANS IN ORDER TO MAINTAIN THE HIGH STANDARDS OF THIS DEVELOPMENT OR TO COMPLY WITH MUNICIPAL REQUIREMENTS. THE SQUARE FOOTAGE AND ROOM DIMENSIONS ARE BASED ON ARCHITECTURAL DRAWINGS AND MEASUREMENTS. THE LOCATION OF UTILITIES MAY NOT BE ACCURATELY DEPICTED HEREIN. FURNITURE LAYOUTS DEPICT STANDARD FURNISHING SIZES AND ARE INTENDED FOR REFERENCE ONLY. ALL SIZES AND DIMENSIONS ARE APPROXIMATE AND ACTUAL AREA AND DIMENSIONS MAY VARY FROM THE PRELIMINARY PLANS TO THE FINAL SURVEY. ERRORS AND OMISSIONS EXCEPTED.

