

THI

±2,164 – ±2,224 SQ. FT.

2-4 Bed 3.5 Bath

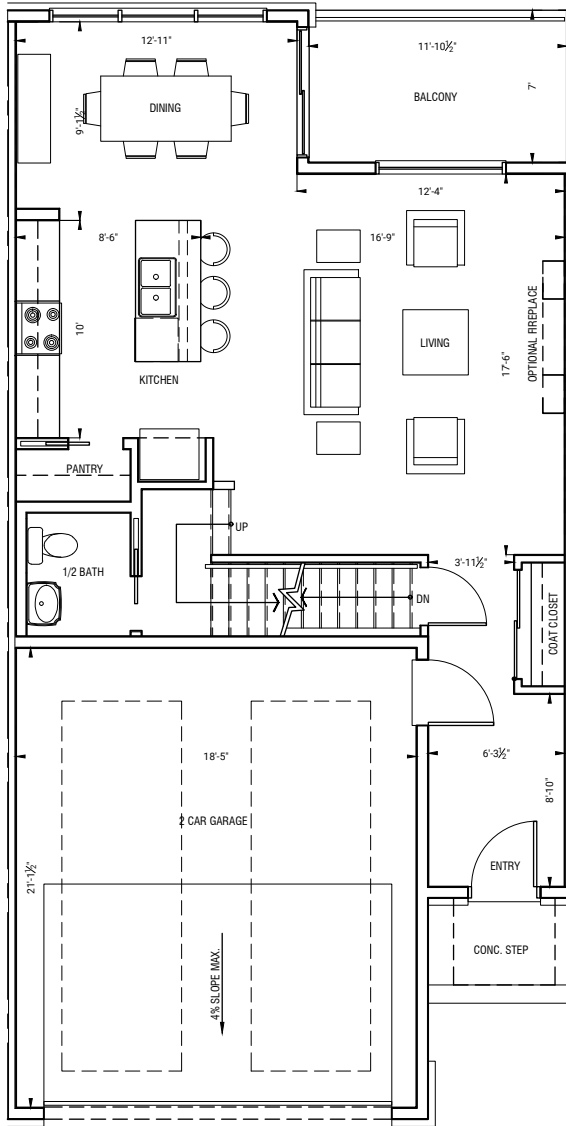


TOWNHOME I

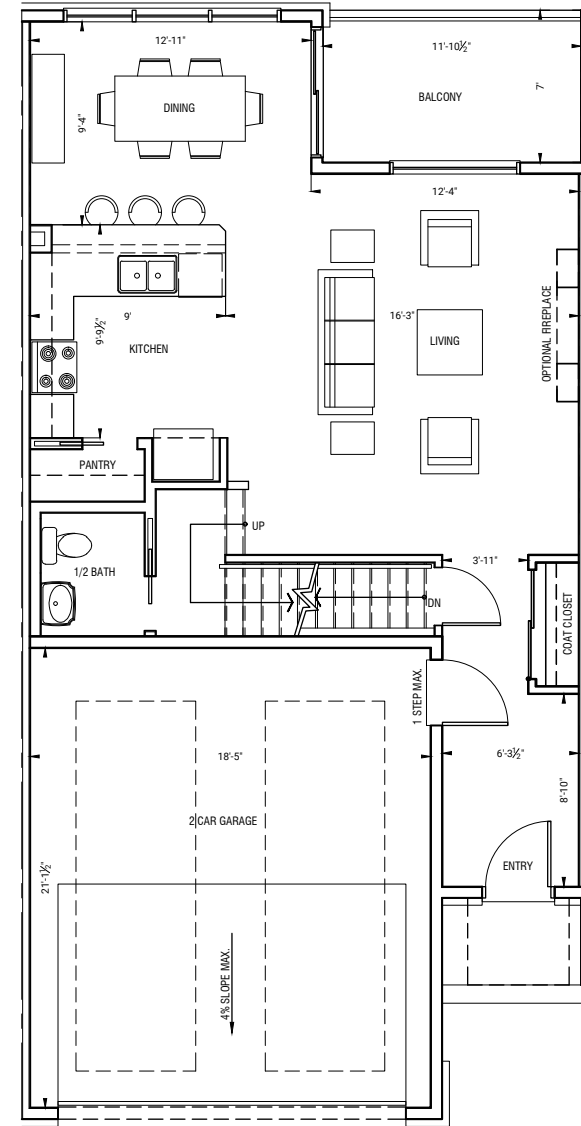


SPRINGWILLOW

MAIN FLOOR ±705 SQ. FT.



MAIN FLOOR OPTION 1
GALLEY KITCHEN



MAIN FLOOR OPTION 2
L-SHAPE KITCHEN

THE DEVELOPER AND BUILDER RESERVE THE RIGHT TO MAKE MODIFICATIONS AND CHANGES TO THE BUILDING. ANY UNIT, PARKING AREA AND STORAGE AREA DESIGN, SPECIFICATIONS, FEATURES AND FLOOR PLANS IN ORDER TO MAINTAIN THE HIGH STANDARDS OF THIS DEVELOPMENT OR TO COMPLY WITH MUNICIPAL REQUIREMENTS. THE SQUARE FOOTAGE AND ROOM DIMENSIONS ARE BASED ON ARCHITECTURAL DRAWINGS AND MEASUREMENTS. THE LOCATION OF UTILITIES MAY NOT BE ACCURATELY DEPICTED HEREIN. FURNITURE LAYOUTS DEPICT STANDARD FURNISHING SIZES AND ARE INTENDED FOR REFERENCE ONLY. ALL SIZES AND DIMENSIONS ARE APPROXIMATE AND ACTUAL AREA AND DIMENSIONS MAY VARY FROM THE PRELIMINARY PLANS TO THE FINAL SURVEY. E. & O. E.



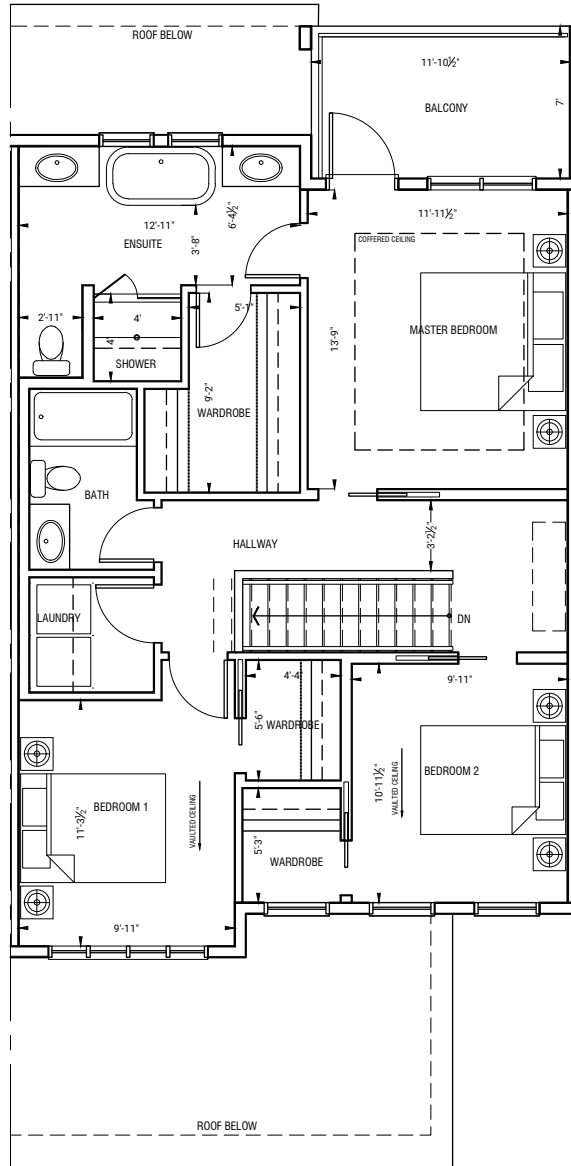
TRUMAN

TOWNHOME I

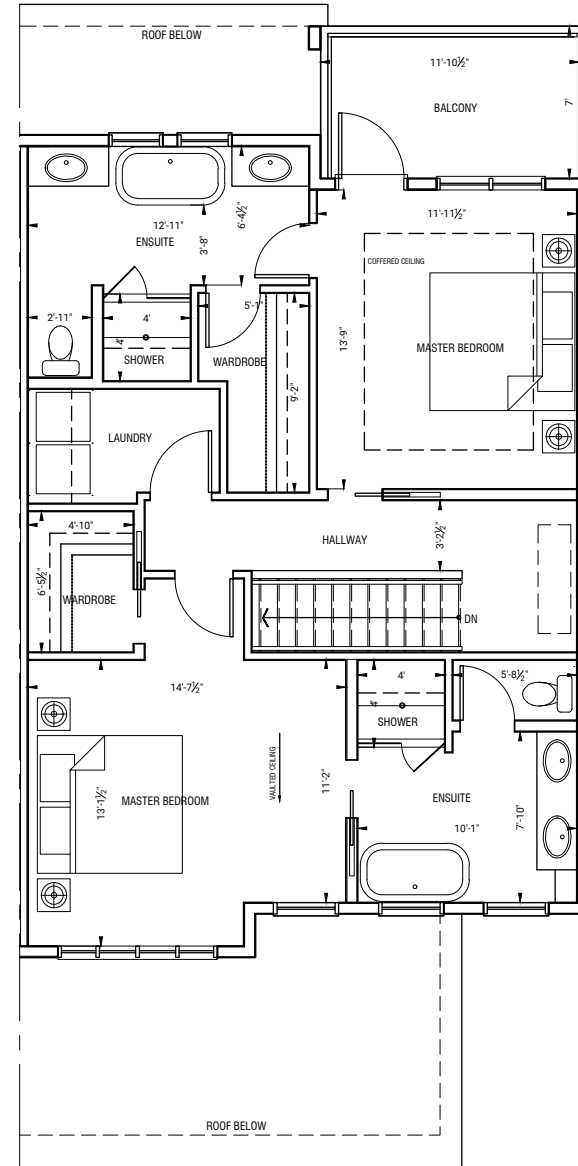


SPRINGWILLOW

UPPER FLOOR ±878 SQ. FT.



UPPER FLOOR **OPTION 1**
3 BEDROOM

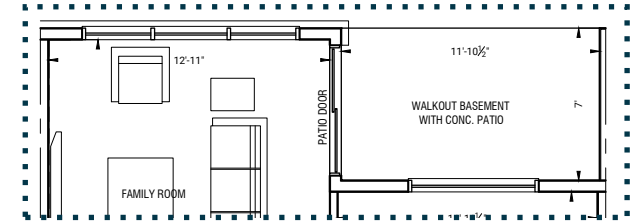
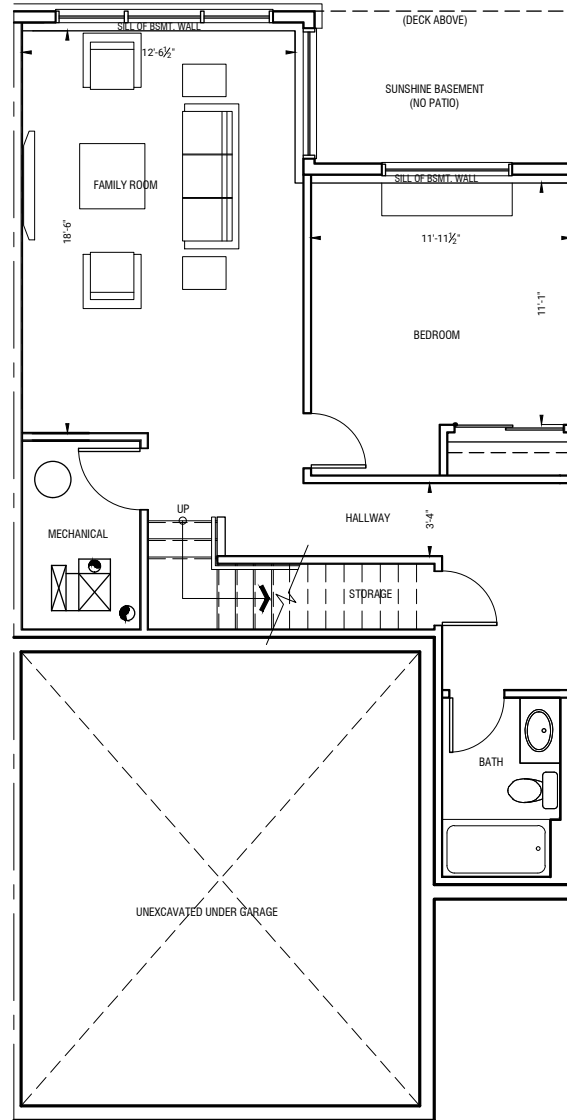


UPPER FLOOR **OPTION 2**
DOUBLE MASTER BEDROOM

THE DEVELOPER AND BUILDER RESERVE THE RIGHT TO MAKE MODIFICATIONS AND CHANGES TO THE BUILDING. ANY UNIT, PARKING AREA AND STORAGE AREA DESIGN, SPECIFICATIONS, FEATURES AND FLOOR PLANS IN ORDER TO MAINTAIN THE HIGH STANDARDS OF THIS DEVELOPMENT OR TO COMPLY WITH MUNICIPAL REQUIREMENTS. THE SQUARE FOOTAGE AND ROOM DIMENSIONS ARE BASED ON ARCHITECTURAL DRAWINGS AND MEASUREMENTS. THE LOCATION OF UTILITIES MAY NOT BE ACCURATELY DEPICTED HEREIN. FURNITURE LAYOUTS DEPICT STANDARD FURNISHING SIZES AND ARE INTENDED FOR REFERENCE ONLY. ALL SIZES AND DIMENSIONS ARE APPROXIMATE AND ACTUAL AREA AND DIMENSIONS MAY VARY FROM THE PRELIMINARY PLANS TO THE FINAL SURVEY. E. & O. E.

TOWNHOME I

LOWER FLOOR ±581 – ±641 SQ. FT.



**Replace with Walk-Out basement as per lot type.*

LOWER FLOOR OPTION

THE DEVELOPER AND BUILDER RESERVE THE RIGHT TO MAKE MODIFICATIONS AND CHANGES TO THE BUILDING. ANY UNIT, PARKING AREA AND STORAGE AREA DESIGN, SPECIFICATIONS, FEATURES AND FLOOR PLANS IN ORDER TO MAINTAIN THE HIGH STANDARDS OF THIS DEVELOPMENT OR TO COMPLY WITH MUNICIPAL REQUIREMENTS. THE SQUARE FOOTAGE AND ROOM DIMENSIONS ARE BASED ON ARCHITECTURAL DRAWINGS AND MEASUREMENTS. THE LOCATION OF UTILITIES MAY NOT BE ACCURATELY DEPICTED HEREIN. FURNITURE LAYOUTS DEPICT STANDARD FURNISHING SIZES AND ARE INTENDED FOR REFERENCE ONLY. ALL SIZES AND DIMENSIONS ARE APPROXIMATE AND ACTUAL AREA AND DIMENSIONS MAY VARY FROM THE PRELIMINARY PLANS TO THE FINAL SURVEY. E. & O. E.

TH2

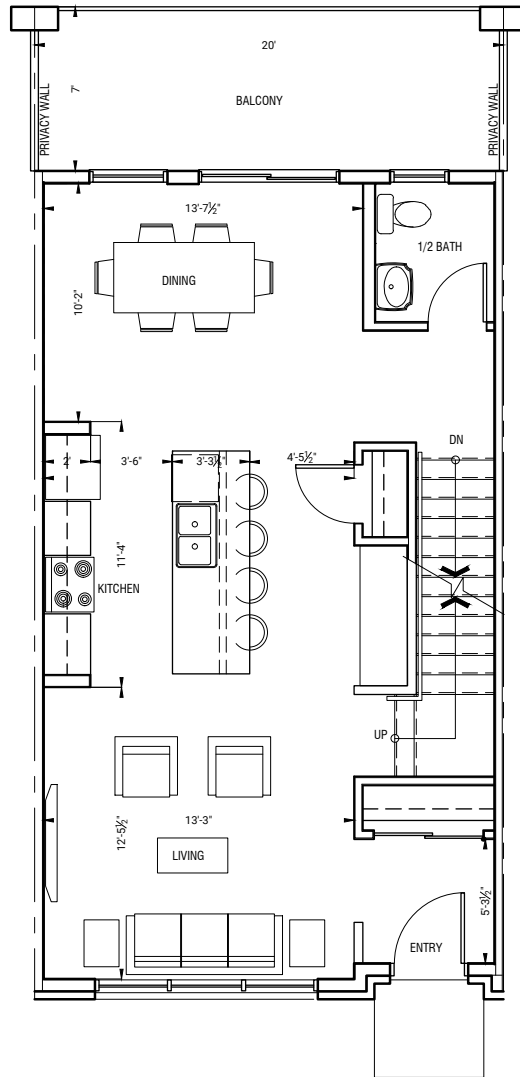
±1,551 – ±1,570 SQ. FT.

2-3 Bed 2.5 Bath

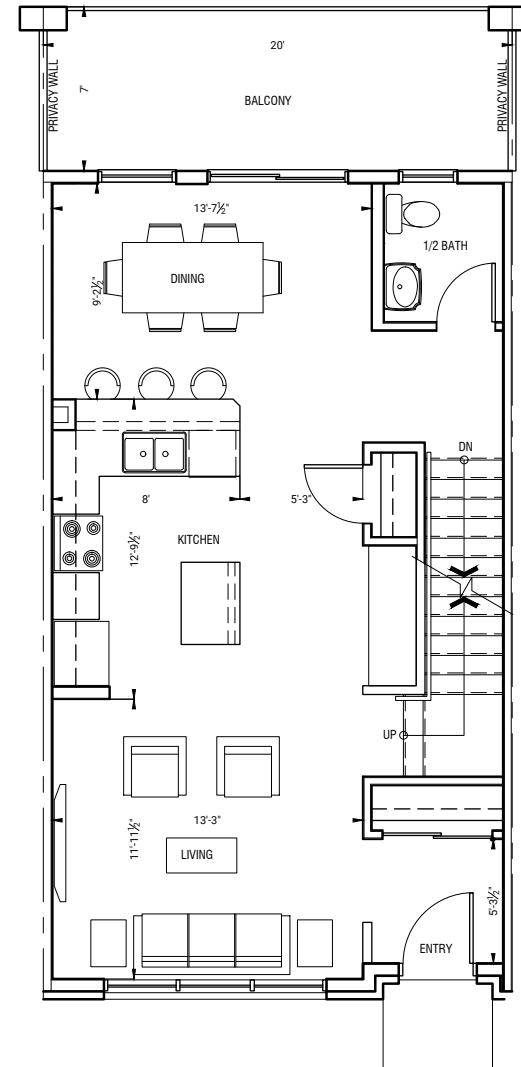


TOWNHOME 2

MAIN FLOOR ±654 – ±663 SQ. FT.



MAIN FLOOR OPTION 1
GALLEY KITCHEN

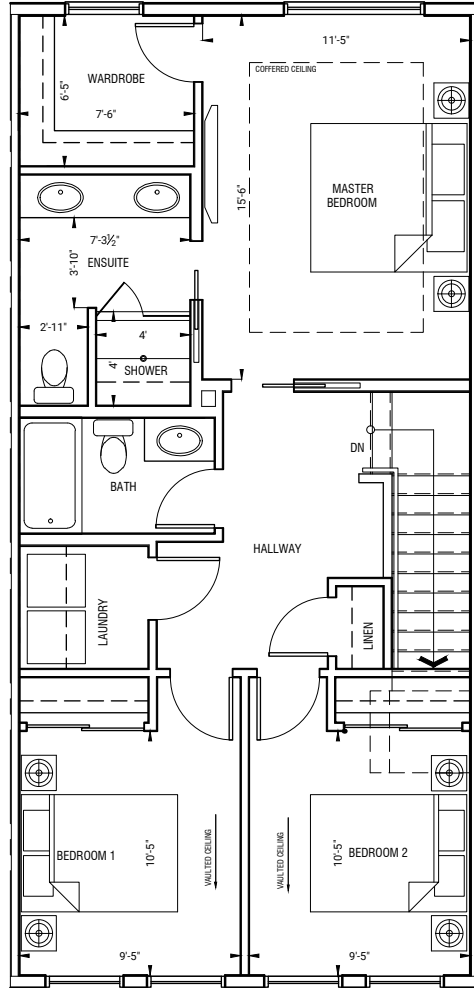


MAIN FLOOR OPTION 2
L-SHAPE KITCHEN

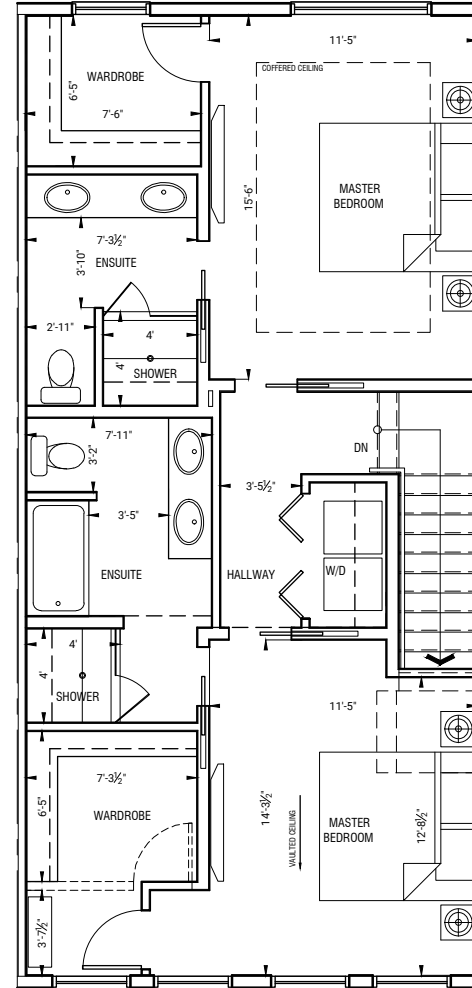
THE DEVELOPER AND BUILDER RESERVE THE RIGHT TO MAKE MODIFICATIONS AND CHANGES TO THE BUILDING. ANY UNIT, PARKING AREA AND STORAGE AREA DESIGN, SPECIFICATIONS, FEATURES AND FLOOR PLANS IN ORDER TO MAINTAIN THE HIGH STANDARDS OF THIS DEVELOPMENT OR TO COMPLY WITH MUNICIPAL REQUIREMENTS. THE SQUARE FOOTAGE AND ROOM DIMENSIONS ARE BASED ON ARCHITECTURAL DRAWINGS AND MEASUREMENTS. THE LOCATION OF UTILITIES MAY NOT BE ACCURATELY DEPICTED HEREIN. FURNITURE LAYOUTS DEPICT STANDARD FURNISHING SIZES AND ARE INTENDED FOR REFERENCE ONLY. ALL SIZES AND DIMENSIONS ARE APPROXIMATE AND ACTUAL AREA AND DIMENSIONS MAY VARY FROM THE PRELIMINARY PLANS TO THE FINAL SURVEY. E. & O. E.

TOWNHOME 2

UPPER FLOOR ±800 – ±810 SQ. FT.



UPPER FLOOR OPTION 1
3 BEDROOM

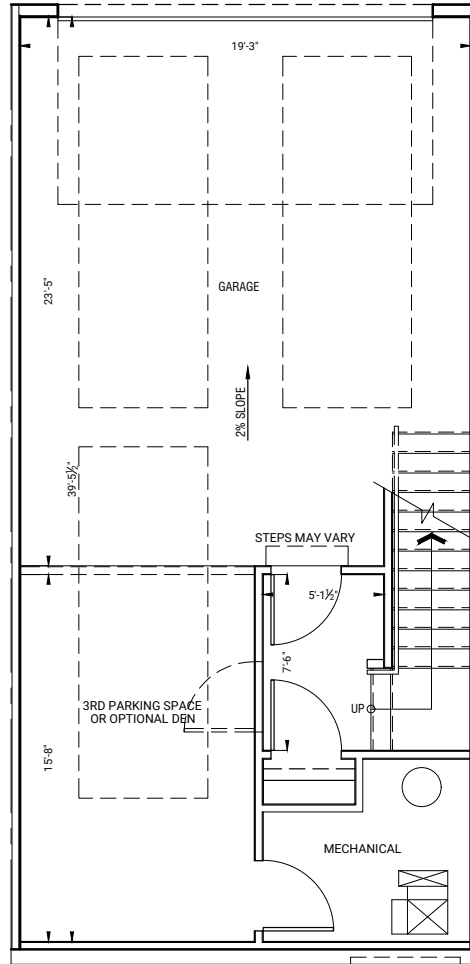


UPPER FLOOR OPTION 2
DOUBLE MASTER BEDROOM

THE DEVELOPER AND BUILDER RESERVE THE RIGHT TO MAKE MODIFICATIONS AND CHANGES TO THE BUILDING. ANY UNIT, PARKING AREA AND STORAGE AREA DESIGN, SPECIFICATIONS, FEATURES AND FLOOR PLANS IN ORDER TO MAINTAIN THE HIGH STANDARDS OF THIS DEVELOPMENT OR TO COMPLY WITH MUNICIPAL REQUIREMENTS. THE SQUARE FOOTAGE AND ROOM DIMENSIONS ARE BASED ON ARCHITECTURAL DRAWINGS AND MEASUREMENTS. THE LOCATION OF UTILITIES MAY NOT BE ACCURATELY DEPICTED HEREIN. FURNITURE LAYOUTS DEPICT STANDARD FURNISHING SIZES AND ARE INTENDED FOR REFERENCE ONLY. ALL SIZES AND DIMENSIONS ARE APPROXIMATE AND ACTUAL AREA AND DIMENSIONS MAY VARY FROM THE PRELIMINARY PLANS TO THE FINAL SURVEY. E. & O. E.

TOWNHOME 2

LOWER FLOOR ±97 SQ. FT.



LOWER FLOOR
GARAGE / OPTIONAL DEN

THE DEVELOPER AND BUILDER RESERVE THE RIGHT TO MAKE MODIFICATIONS AND CHANGES TO THE BUILDING. ANY UNIT, PARKING AREA AND STORAGE AREA DESIGN, SPECIFICATIONS, FEATURES AND FLOOR PLANS IN ORDER TO MAINTAIN THE HIGH STANDARDS OF THIS DEVELOPMENT OR TO COMPLY WITH MUNICIPAL REQUIREMENTS. THE SQUARE FOOTAGE AND ROOM DIMENSIONS ARE BASED ON ARCHITECTURAL DRAWINGS AND MEASUREMENTS. THE LOCATION OF UTILITIES MAY NOT BE ACCURATELY DEPICTED HEREIN. FURNITURE LAYOUTS DEPICT STANDARD FURNISHING SIZES AND ARE INTENDED FOR REFERENCE ONLY. ALL SIZES AND DIMENSIONS ARE APPROXIMATE AND ACTUAL AREA AND DIMENSIONS MAY VARY FROM THE PRELIMINARY PLANS TO THE FINAL SURVEY. E. & O. E.

TH3

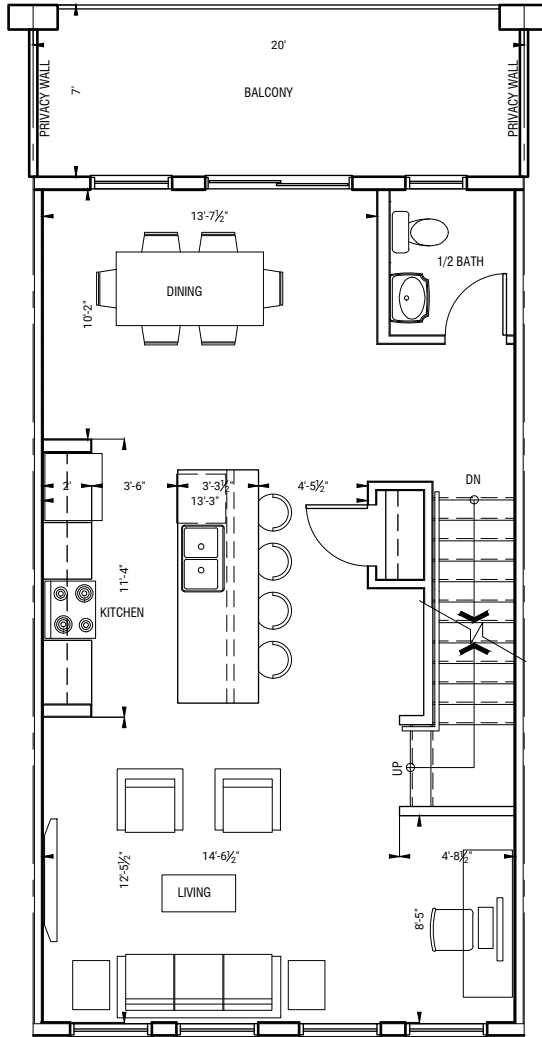
±1,673 – ±1,752 SQ. FT.

2-4 Bed 2.5 Bath

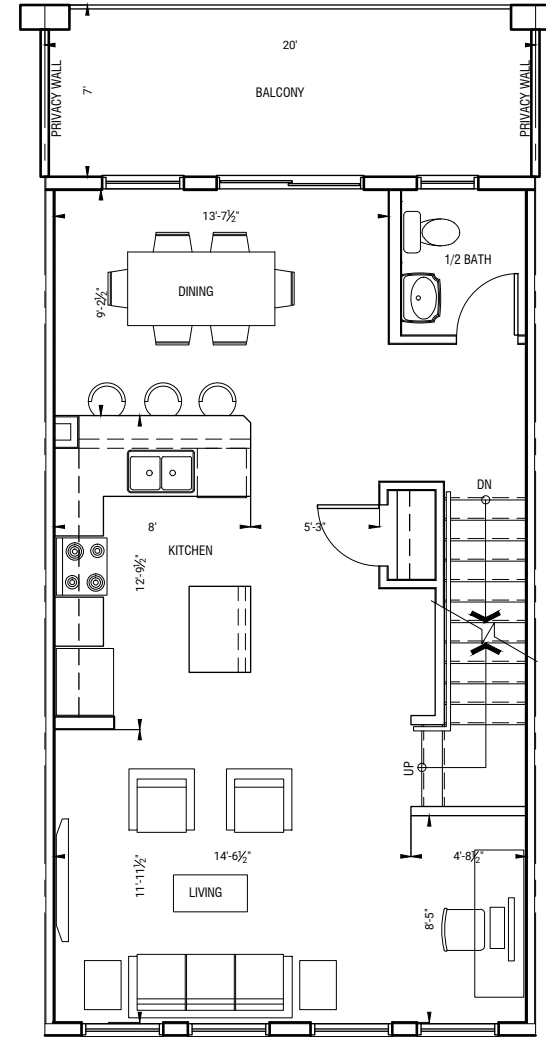


TOWNHOME 3

MAIN FLOOR ±658 – ±667 SQ. FT.



MAIN FLOOR OPTION 1
GALLEY KITCHEN

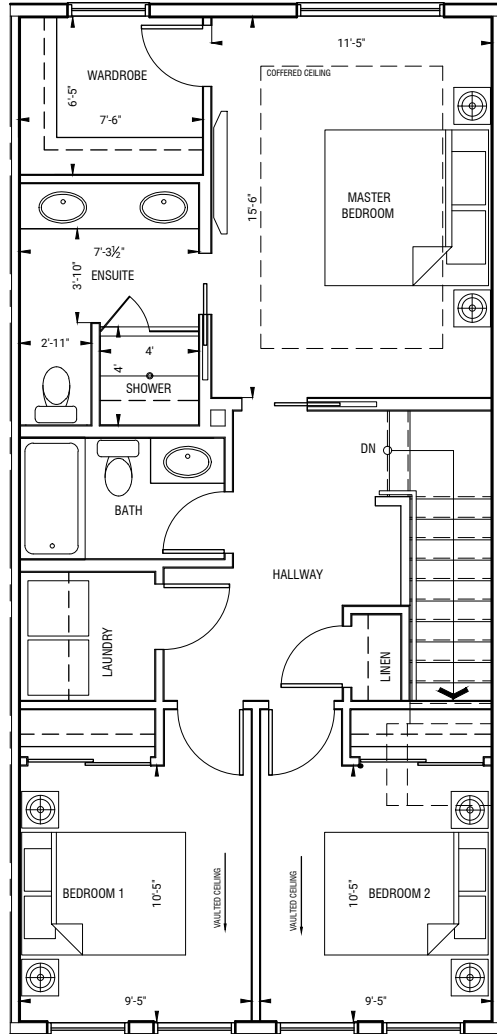


MAIN FLOOR OPTION 2
L-SHAPE KITCHEN

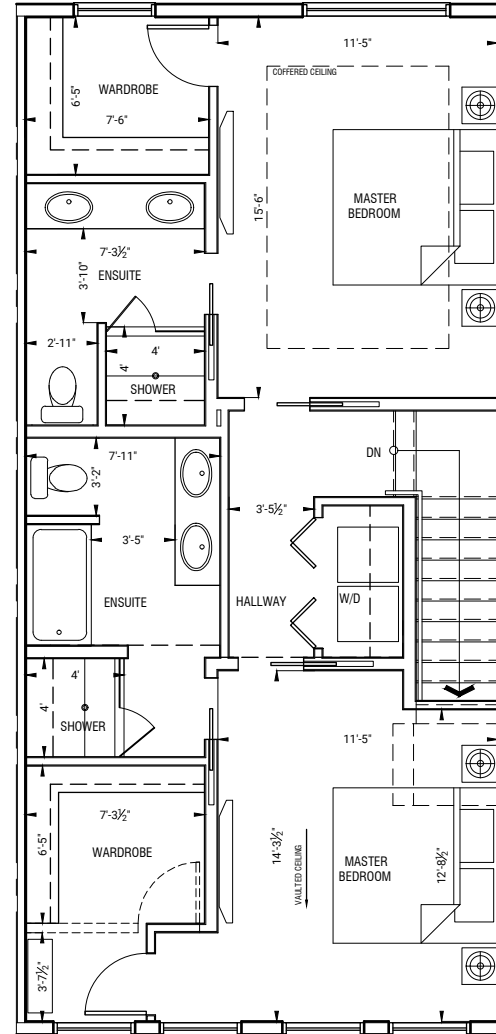
THE DEVELOPER AND BUILDER RESERVE THE RIGHT TO MAKE MODIFICATIONS AND CHANGES TO THE BUILDING. ANY UNIT, PARKING AREA AND STORAGE AREA DESIGN, SPECIFICATIONS, FEATURES AND FLOOR PLANS IN ORDER TO MAINTAIN THE HIGH STANDARDS OF THIS DEVELOPMENT OR TO COMPLY WITH MUNICIPAL REQUIREMENTS. THE SQUARE FOOTAGE AND ROOM DIMENSIONS ARE BASED ON ARCHITECTURAL DRAWINGS AND MEASUREMENTS. THE LOCATION OF UTILITIES MAY NOT BE ACCURATELY DEPICTED HEREIN. FURNITURE LAYOUTS DEPICT STANDARD FURNISHING SIZES AND ARE INTENDED FOR REFERENCE ONLY. ALL SIZES AND DIMENSIONS ARE APPROXIMATE AND ACTUAL AREA AND DIMENSIONS MAY VARY FROM THE PRELIMINARY PLANS TO THE FINAL SURVEY. E. & O. E.

TOWNHOME 3

UPPER FLOOR ±793 – ±803 SQ. FT.



UPPER FLOOR **OPTION 1**
3 BEDROOM

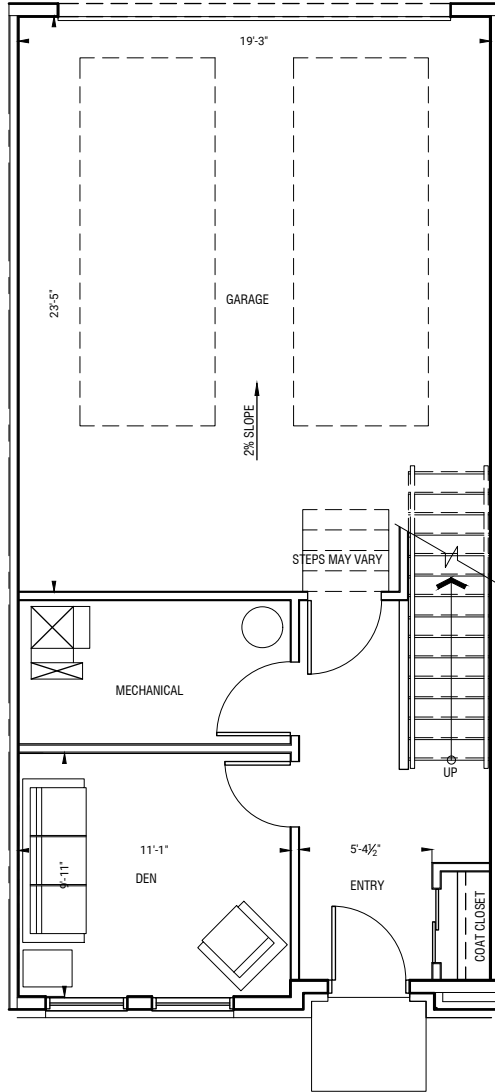


UPPER FLOOR **OPTION 2**
DOUBLE MASTER BEDROOM

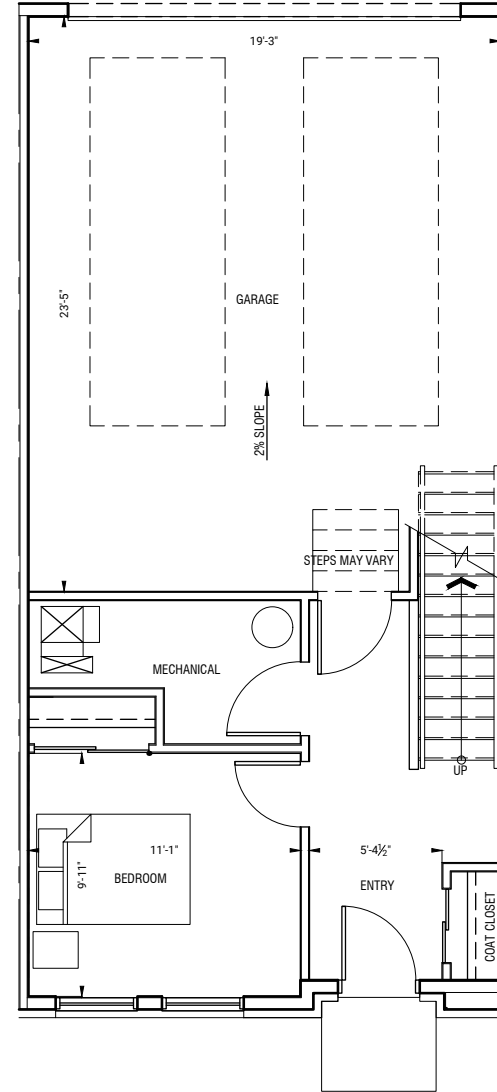
THE DEVELOPER AND BUILDER RESERVE THE RIGHT TO MAKE MODIFICATIONS AND CHANGES TO THE BUILDING. ANY UNIT, PARKING AREA AND STORAGE AREA DESIGN, SPECIFICATIONS, FEATURES AND FLOOR PLANS IN ORDER TO MAINTAIN THE HIGH STANDARDS OF THIS DEVELOPMENT OR TO COMPLY WITH MUNICIPAL REQUIREMENTS. THE SQUARE FOOTAGE AND ROOM DIMENSIONS ARE BASED ON ARCHITECTURAL DRAWINGS AND MEASUREMENTS. THE LOCATION OF UTILITIES MAY NOT BE ACCURATELY DEPICTED HEREIN. FURNITURE LAYOUTS DEPICT STANDARD FURNISHING SIZES AND ARE INTENDED FOR REFERENCE ONLY. ALL SIZES AND DIMENSIONS ARE APPROXIMATE AND ACTUAL AREA AND DIMENSIONS MAY VARY FROM THE PRELIMINARY PLANS TO THE FINAL SURVEY. E. & O. E.

TOWNHOME 3

LOWER FLOOR ±222 – ±282 SQ. FT.



LOWER FLOOR **OPTION 1**
DEN



LOWER FLOOR **OPTION 2**
BEDROOM

THE DEVELOPER AND BUILDER RESERVE THE RIGHT TO MAKE MODIFICATIONS AND CHANGES TO THE BUILDING. ANY UNIT, PARKING AREA AND STORAGE AREA DESIGN, SPECIFICATIONS, FEATURES AND FLOOR PLANS IN ORDER TO MAINTAIN THE HIGH STANDARDS OF THIS DEVELOPMENT OR TO COMPLY WITH MUNICIPAL REQUIREMENTS. THE SQUARE FOOTAGE AND ROOM DIMENSIONS ARE BASED ON ARCHITECTURAL DRAWINGS AND MEASUREMENTS. THE LOCATION OF UTILITIES MAY NOT BE ACCURATELY DEPICTED HEREIN. FURNITURE LAYOUTS DEPICT STANDARD FURNISHING SIZES AND ARE INTENDED FOR REFERENCE ONLY. ALL SIZES AND DIMENSIONS ARE APPROXIMATE AND ACTUAL AREA AND DIMENSIONS MAY VARY FROM THE PRELIMINARY PLANS TO THE FINAL SURVEY. E. & O. E.

THE BUILDING

- Built by 3 year in a row Customer Choice Award Winner for highest Customer Satisfaction, Truman.
- Peace of mind provided through our comprehensive warranty program: 1 Year on Workmanship & Materials, 2 Year Warranty of Delivery & Distribution Systems, 5 Year Building Envelope Coverage, and a 10 Year Structural Warranty.
- Comprehensive coverage including deposit payments are protected by the Alberta New Home Warranty Program.
- Clad in brick and James Hardie siding, these homes feature maintenance free exteriors highlighting large private decks.
- Approximately ±9 foot ceilings on main floor, featuring energy saving high performance windows.
- Knockdown ceilings throughout finished areas
- Luscious professionally designed and irrigated landscaped areas throughout site.



THE HOMES

Arcola Townhomes at Spring Willow are elegant residences created and curated by Truman's award-winning interior design team highlighted by the finishes below;

Fresh Flooring

- Selection of high quality wide plank laminate flooring with acoustic underlay throughout main living areas, excluding tile areas & stairs (*upper floor optional*).
- Plush high grade patterned carpet on stairs & upper floors.
- Contemporary imported 12" x 24" high gloss Carrera style ceramic floor tile.
- Custom set full height brick tile kitchen backsplashes (*optional upgrade to full height quartz backsplash*).

Windows & Doors

- Custom designed entry door accented by individual custom lighting fixture by entrance.
- High quality aluminum clad low maintenance windows with clear thermal glazing where all operating windows have screens. Windows to be black on the exterior and white on the interior.
- Privacy matters – Optional 2" sophisticated designer window treatment package for all applicable windows.

Meticulous Millwork

- Smooth panel doors with levered anti scuff and scratch Taymor door hardware throughout.
- Modern 4 inch profile painted baseboards.
- Modern 3 inch profile painted door frames and casings.
- Ample Glide Free™ closet storage shelving as per plan.
- Master walk-in closet cabinet featuring white textured medina cabinet tower.

Brilliant Lighting

- Integrated recessed LED lighting throughout.
- Selection of hand-picked, contemporary & energy efficient interior light fixtures.
- 6 LED pot lights throughout main floor

THE KITCHENS

- Award winning cabinetry by Truman's acclaimed design team available in Noir or Blanc colour palettes.
- Floor to ceiling ergonomic TRUspace™ cabinets featuring textured, premium, zero-edge finishes accented by soft close door & drawer hardware and integrated storage.
- Polished quartz hard surface eased edge countertops.
- Square under-mount sink with industrial high arc single lever faucet.
- Full height tile kitchen backsplashes.
- Energy saving under cabinet LED lighting.
- Custom made cabinet door hardware (*as per selections*).
- Soft close door & drawer technology with versatile and easy access cutlery drawer, two deep drawers for pots, pans and a cookie tray sheet divider over fridge.



THE APPLIANCES

- Whirlpool 36" stainless steel counter depth refrigerator with ice & water maker.
- *Optional* - Custom paneled Fisher & Paykel 36" built-in French door refrigerator with ice maker in freezer (*non-dispensing*), glass shelves and Active Smart system.
- Whirlpool 1.6 cubic ft. microwave with 27" trim kit.
- 300 CFM chimney hood fan above range.
- Whirlpool gas front control range: stainless steel, electronic ignition, 4 sealed gas burners, self-cleaning 5.0 cubic ft. oven and cast iron full width satin finish grates.
- Whirlpool 24" stainless steel built-in dishwasher: stainless steel tub, fully integrated controls, in-door silverware basket, adjustable upper rack & sensor cycle.
- Convenient and ultra-quiet in-suite Energy Star® front load stacking Washer and Dryer vented to the exterior, with quick water shut off valve.

THE BATHROOMS

- Convenient two-piece powder room on main living area.
- Eased edge polished quartz counter tops (*as per plan*).
- Modern square edge tub with sloping lumbar support and upgraded contemporary tiles reveal a luxe spa atmosphere.
- Chrome plumbing fixtures with undermount porcelain vessel sink.
- Porcelain comfort-height toilets.
- Matching Taymor hardware and accessories.
- Polished edge glass shower door and frame (*as per plan, in ensuite only where applicable*).
- Environmentally conscious Water Sense® fixtures, shower heads, and toilets.
- Safety and pressure-balancing mixing valves for tub and showers for well-being.



THE MECHANICS

- Forced-air high efficiency gas furnace with drip humidifier and a high efficiency hot water tank (electric).
- Roughed-in for security, VACUFLO system, and home networking (low voltage cabling to smart panel).
- Programmable thermostat and power HRV (heat recovery ventilator)
- Smart technology featuring integrated wiring to panel, one smart plug USB jack connections and TV / Telephone connections in principal areas.

